

52"/54" VINYL WALLCOVERINGS

## Product Specifications

Type II, Medium Weight, Class A, Vinyl Coated

Fabric Backed Wallcovering

Width : 52"/54" (132 cm/137cm)

Total Weight : 15.0.oz./lin.yard - 466 gr/lin-meter

Backing : Woven Cotton Backing

Fire Rated : Class - "A" Tested In Accordance  
ASTM E-84 Tunnel Test

Tensile Breaking Strength : 80X75 Pounds

Flame Spread : 20

Smoke Developed : 25

Pattern Match : Random Match

Packaging : 50 Meter Bolts



US Classification : ASTM-E84 Class - A

CHN Classification : GB8624-2012: Class B

EU Classification : EN 15102 : 2007+A1 : 2011



## Anti Microbial Features:

Water based environmentally friendly inks, free of Cadmium, Mercury and Ozone depleting chemicals.

## Wall Surface Preparations:

The wall surface must be clean, smooth, stable, even and all in one colour before hanging wallpaper. The wall should be dry enough with a maximum of 8% water absorption. If the other side of the wall is in a bathroom, the surface of the wall must be water proof. If the wall is wet of mouldy, the mould needs to be eliminated completely by brushing fungicide on it which will also make it moisture proof.

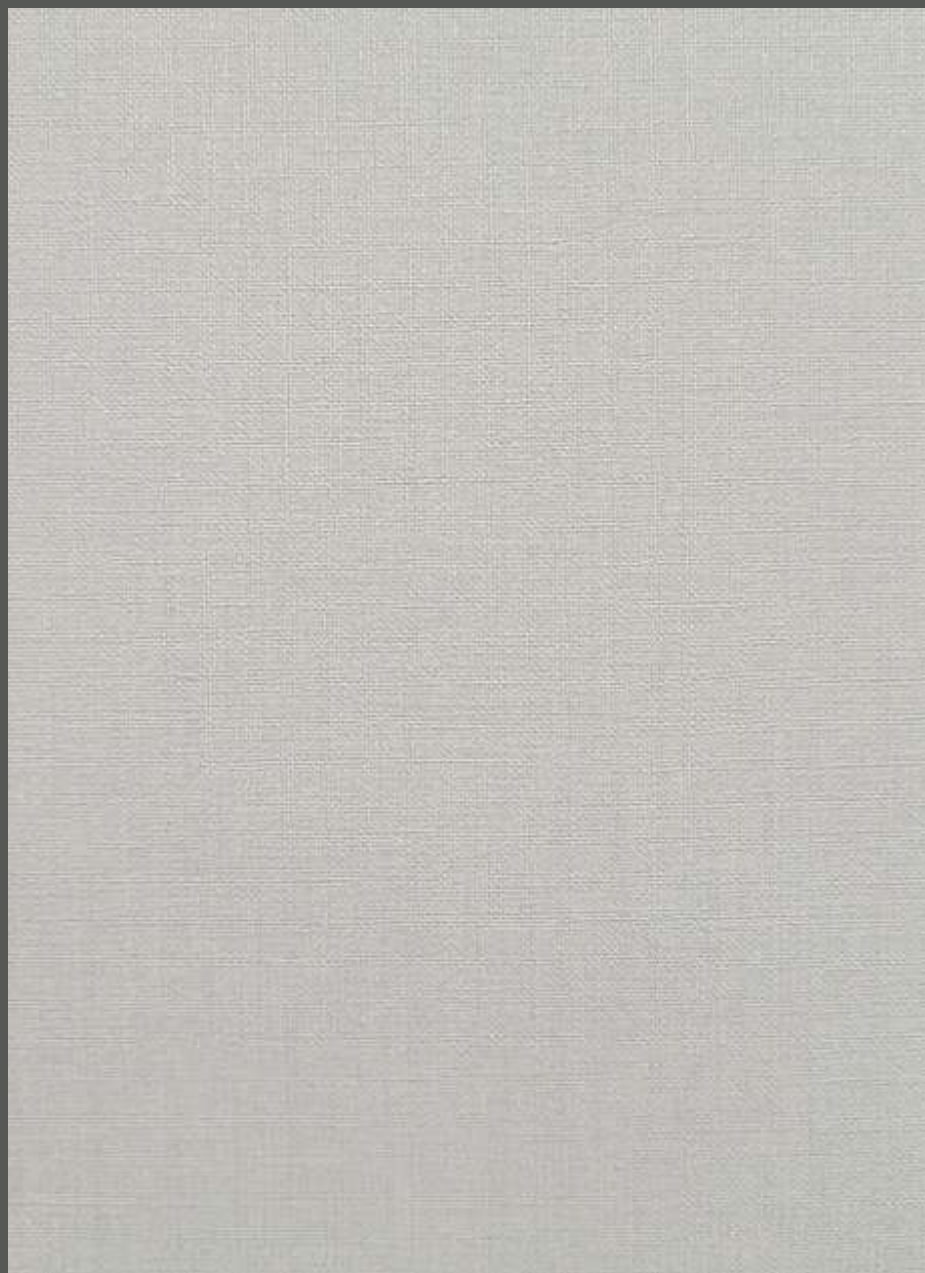
## Adhesive Applying:

Apply adhesive evenly to the back of the wallpaper, fold and leave it for 5-10 minutes, and let the cloth absorb the adhesive completely. For heavy wallpaper, you can also brush adhesive directly to the wall and wait 5-10 minutes before hanging.

## Hanging :

Start to hang from a corner and use a plumb line to ensure the wallpaper is straight and not leaning to one side, if the corner you started from is not straight, use a wiper board to smooth the wallpaper evenly and gently to remove any bubbles. For heavier wallpaper, use a strong glue for the seams. When applying the second strip, it should be applied to edge of the previous one and make sure the design is matched. For plain wallpapers there is no need to match. Overlap the two strips and use a sharp knife to cut in the middle. To make the cutting line straight, use a steel ruler.





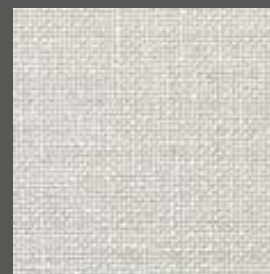
W1333-1

REMATT

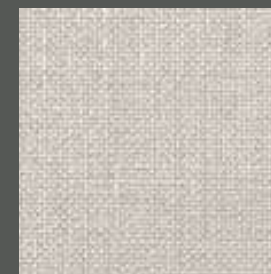
## ENVIRONMENTAL WALL COVERING



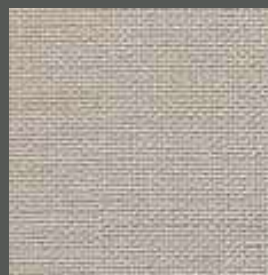
W1333-2



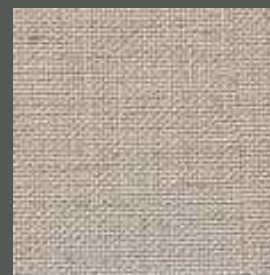
W1333-3



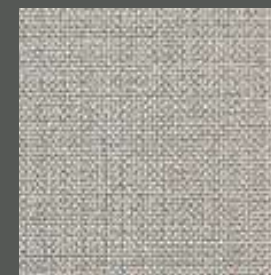
W1333-4



W1333-5



W1333-6



W1333-7



W1333-8



W1333-9



W1333-10



W1333-11



W1333-12



W1333-13



SELECT



SYDNY



42"/44" VINYL WALLCOVERINGS

SELECT/SYDNY

SELECT/SYDNY

### Product Specifications

Type II, Medium Weight, Class A, Vinyl Coated	
Fabric Backed Wallcovering	
Width	: 42"/44" (107 cm/112 cm)
Total Weight	: 15.0.oz./lin.yard - 375 gr/lin-meter
Backing	: Woven Cotton Backing
Fire Rated	: Class - "A" Tested In Accordance ASTM E-84 Tunnel Test
Tensile Breaking Strength	: 80X75 Pounds
Flame Spread	: 20
Smoke Developed	: 25
Pattern Match	: Random Match
Packaging	: 50 Meter Bolts



US Classification : ASTM-E84 Class - A

CHN Classification : GB8624-2012: Class B

EU Classification : EN 15102 : 2007+A1 : 2011



### Anti Microbial Features:

Water based environmentally friendly inks, free of Cadmium, Mercury and Ozone depleting chemicals.

### Wall Surface Preparations:

The wall surface must be clean, smooth, stable, even and all in one colour before hanging wallpaper. The wall should be dry enough with a maximum of 8% water absorption. If the other side of the wall is in a bathroom, the surface of the wall must be water proof. If the wall is wet of mouldy, the mould needs to be eliminated completely by brushing fungicide on it which will also make it moisture proof.

### Adhesive Applying:

Apply adhesive evenly to the back of the wallpaper, fold and leave it for 5-10 minutes, and let the cloth absorb the adhesive completely. For heavy wallpaper, you can also brush adhesive directly to the wall and wait 5-10 minutes before hanging.

### Hanging :

Start to hang from a corner and use a plumb line to ensure the wallpaper is straight and not leaning to one side, if the corner you started from is not straight, use a wiper board to smooth the wallpaper evenly and gently to remove any bubbles. For heavier wallpaper, use a strong glue for the seams. When applying the second strip, it should be applied to edge of the previous one and make sure the design is matched. For plain wallpapers there is no need to match. Overlap the two strips and use a sharp knife to cut in the middle. To make the cutting line straight, use a steel ruler.

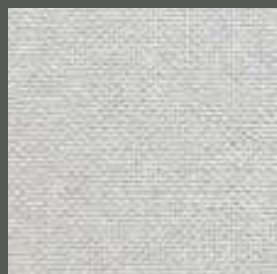


Designed in USA

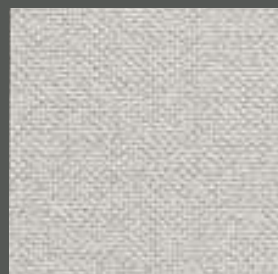
## SELECT



W4211-1



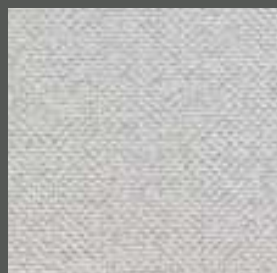
W4211-2



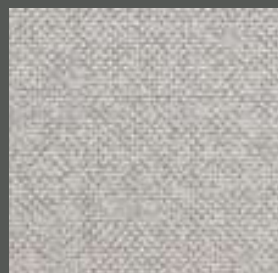
W4211-3



W4211-4



W4211-5



W4211-6



W4211-7

## SYDNY

## ENVIRONMENTAL WALL COVERING



W4711-1



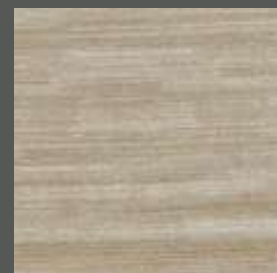
W4711-2



W4711-3



W4711-4



W4711-5



W4711-6





52" / 54" VINYL WALLCOVERINGS

## Product Specifications

Type II, Medium Weight, Class A, Vinyl Coated

Fabric Backed Wallcovering

Width : 52"/54" (132 cm/137cm)

Total Weight : 15.0.oz./lin.yard - 466 gr/lin-meter

Backing : Woven Cotton Backing

Fire Rated : Class - "A" Tested In Accordance  
ASTM E-84 Tunnel Test

Tensile Breaking Strength : 80X75 Pounds

Flame Spread : 20

Smoke Developed : 25

Pattern Match : Random Match

Packaging : 50 Meter Bolts



US Classification : ASTM-E84 Class - A

CHN Classification : GB8624-2012: Class B

EU Classification : EN 15102 : 2007+A1 : 2011



## Anti Microbial Features:

Water based environmentally friendly inks, free of Cadmium, Mercury and Ozone depleting chemicals.

## Wall Surface Preparations:

The wall surface must be clean, smooth, stable, even and all in one colour before hanging wallpaper. The wall should be dry enough with a maximum of 8% water absorption. If the other side of the wall is in a bathroom, the surface of the wall must be water proof. If the wall is wet or mouldy, the mould needs to be eliminated completely by brushing fungicide on it which will also make it moisture proof.

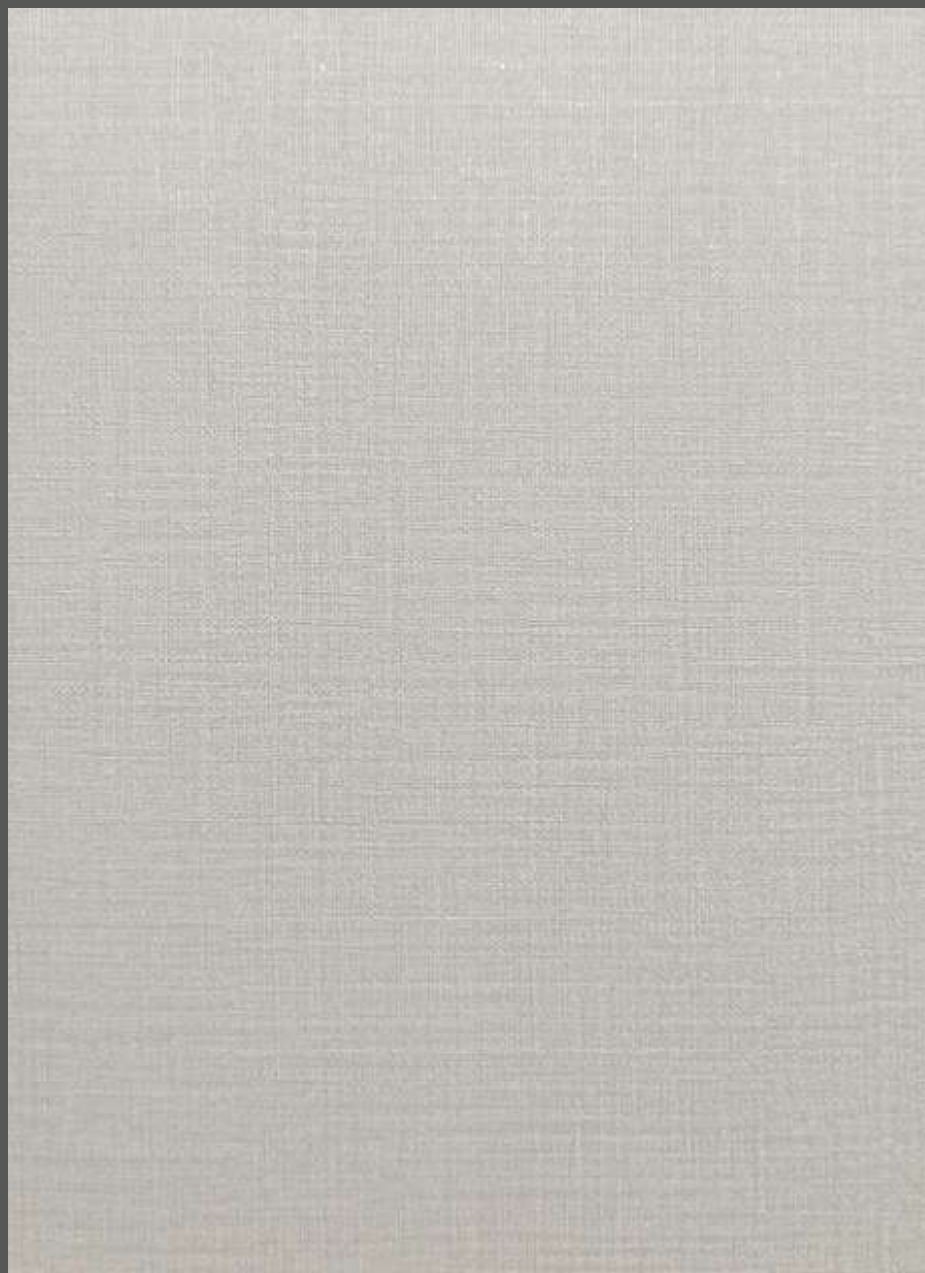
## Adhesive Applying:

Apply adhesive evenly to the back of the wallpaper, fold and leave it for 5-10 minutes, and let the cloth absorb the adhesive completely. For heavy wallpaper, you can also brush adhesive directly to the wall and wait 5-10 minutes before hanging.

## Hanging :

Start to hang from a corner and use a plumb line to ensure the wallpaper is straight and not leaning to one side, if the corner you started from is not straight, use a wiper board to smooth the wallpaper evenly and gently to remove any bubbles. For heavier wallpaper, use a strong glue for the seams. When applying the second strip, it should be applied to edge of the previous one and make sure the design is matched. For plain wallpapers there is no need to match. Overlap the two strips and use a sharp knife to cut in the middle. To make the cutting line straight, use a steel ruler.

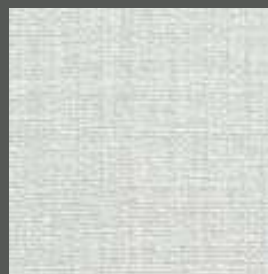




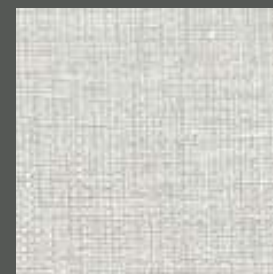
W5412-1

DETER

## ENVIRONMENTAL WALL COVERING



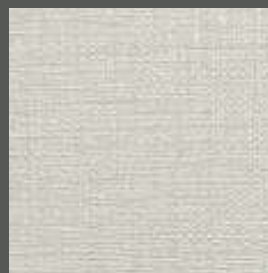
W5412-2



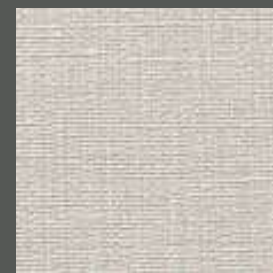
W5412-3



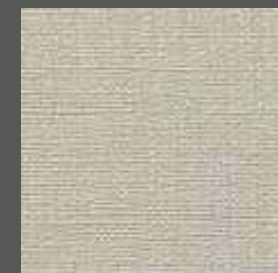
W5412-4



W5412-5



W5412-6



W5412-7



W5412-8



W5412-9



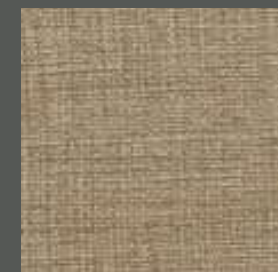
W5412-10



W5412-11



W5412-12



W5412-13



SILKY



MINQ



42"/44" VINYL WALLCOVERINGS

SILKY/MINQ

SILKY/MINQ

### Product Specifications

Type II, Medium Weight, Class A, Vinyl Coated	
Fabric Backed Wallcovering	
Width	: 42"/44" (107 cm/112 cm)
Total Weight	: 15.0.oz./lin.yard - 375 gr/lin-meter
Backing	: Woven Cotton Backing
Fire Rated	: Class - "A" Tested In Accordance ASTM E-84 Tunnel Test
Tensile Breaking Strength	: 80X75 Pounds
Flame Spread	: 20
Smoke Developed	: 25
Pattern Match	: Random Match
Packaging	: 50 Meter Bolts



US Classification : ASTM-E84 Class - A

CHN Classification : GB8624-2012: Class B

EU Classification : EN 15102 : 2007+A1 : 2011



### Anti Microbial Features:

Water based environmentally friendly inks, free of Cadmium. Mercury and Ozone depleting chemicals.

### Wall Surface Preparations:

The wall surface must be clean, smooth, stable, even and all in one colour before hanging wallpaper. The wall should be dry enough with a maximum of 8% water absorption. If the other side of the wall is in a bathroom, the surface of the wall must be water proof. If the wall is wet of mouldy, the mould needs to be eliminated completely by brushing fungicide on it which will also make it moisture proof.

### Adhesive Applying:

Apply adhesive evenly to the back of the wallpaper, fold and leave it for 5-10 minutes, and let the cloth absorb the adhesive completely. For heavy wallpaper, you can also brush adhesive directly to the wall and wait 5-10 minutes before hanging.

### Hanging :

Start to hang from a corner and use a plumb line to ensure the wallpaper is straight and not leaning to one side, if the corner you started from is not straight, use a wiper board to smooth the wallpaper evenly and gently to remove any bubbles. For heavier wallpaper, use a strong glue for the seams. When applying the second strip, it should be applied to edge of the previous one and make sure the design is matched. For plain wallpapers there is no need to match. Overlap the two strips and use a sharp knife to cut in the middle. To make the cutting line straight, use a steel ruler.

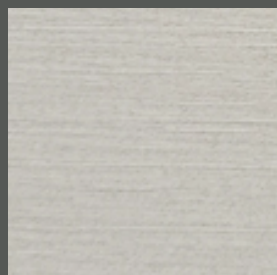


Designed in USA

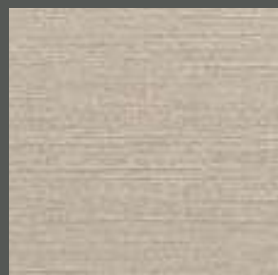
SILKY



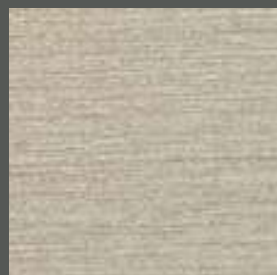
W4221-1



W4221-2



W4221-3



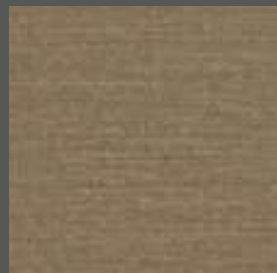
W4221-4



W4221-5



W4221-6



W4221-7

MINQ

ENVIRONMENTAL WALL COVERING



W4313-1



W4313-2



W4313-3



W4313-4



W4313-5



W4313-6



W4313-7





52"/54" VINYL WALLCOVERINGS

### Product Specifications

Type II, Medium Weight, Class A, Vinyl Coated

Fabric Backed Wallcovering

Width : 52"/54" (132 cm/137cm)

Total Weight : 15.0.oz./lin.yard - 466 gr/lin-meter

Backing : Woven Cotton Backing

Fire Rated : Class - "A" Tested In Accordance  
ASTM E-84 Tunnel Test

Tensile Breaking Strength : 80X75 Pounds

Flame Spread : 20

Smoke Developed : 25

Pattern Match : Random Match

Packaging : 50 Meter Bolts



US Classification : ASTM-E84 Class - A

CHN Classification : GB8624-2012: Class B

EU Classification : EN 15102 : 2007+A1 : 2011



### Anti Microbial Features:

Water based environmentally friendly inks, free of Cadmium, Mercury and Ozone depleting chemicals.

### Wall Surface Preparations:

The wall surface must be clean, smooth, stable, even and all in one colour before hanging wallpaper. The wall should be dry enough with a maximum of 8% water absorption. If the other side of the wall is in a bathroom, the surface of the wall must be water proof. If the wall is wet or mouldy, the mould needs to be eliminated completely by brushing fungicide on it which will also make it moisture proof.

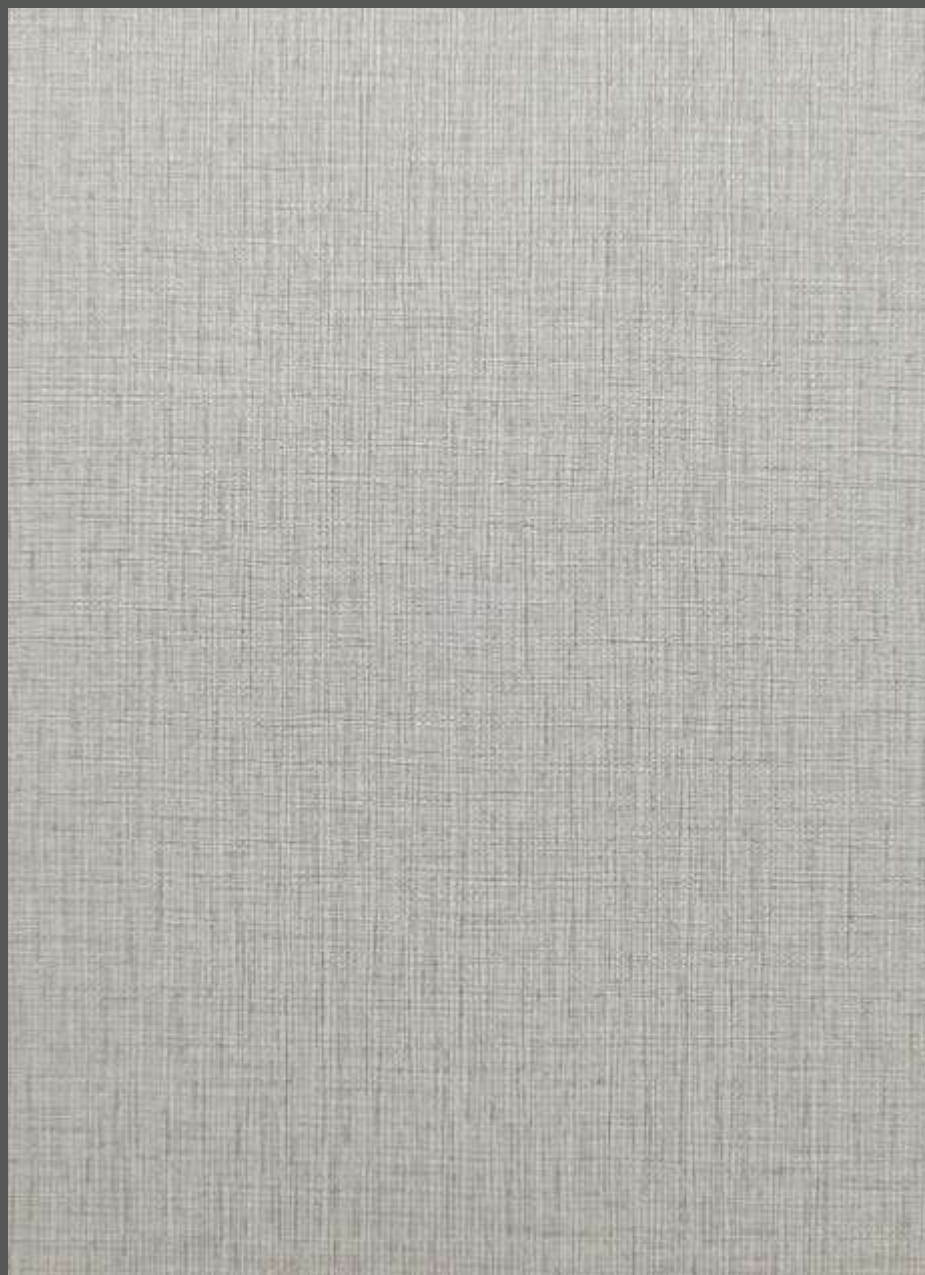
### Adhesive Applying:

Apply adhesive evenly to the back of the wallpaper, fold and leave it for 5-10 minutes, and let the cloth absorb the adhesive completely. For heavy wallpaper, you can also brush adhesive directly to the wall and wait 5-10 minutes before hanging.

### Hanging :

Start to hang from a corner and use a plumb line to ensure the wallpaper is straight and not leaning to one side, if the corner you started from is not straight, use a wiper board to smooth the wallpaper evenly and gently to remove any bubbles. For heavier wallpaper, use a strong glue for the seams. When applying the second strip, it should be applied to edge of the previous one and make sure the design is matched. For plain wallpapers there is no need to match. Overlap the two strips and use a sharp knife to cut in the middle. To make the cutting line straight, use a steel ruler.

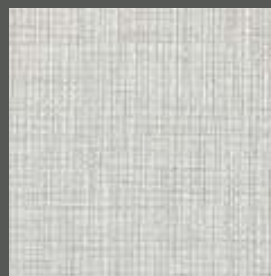




W5611-1

ZILAS

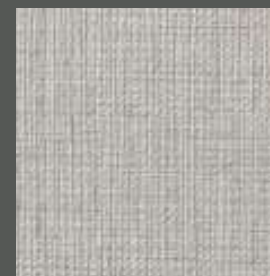
## ENVIRONMENTAL WALL COVERING



W5611-2



W5611-3



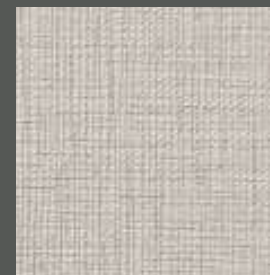
W5611-4



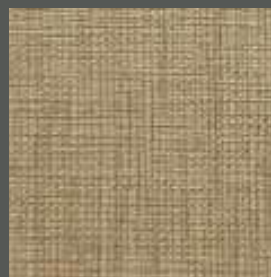
W5611-5



W5611-6



W5611-7



W5611-8



W5611-9



W5611-10



W5611-11



W5611-12



W5611-13



INGUS



ORIENTA



52"/54" VINYL WALLCOVERINGS

LINGUS/ORIENTA

LINGUS/ORIENTA

### Product Specifications

Type II, Medium Weight, Class A, Vinyl Coated	
Fabric Backed Wallcovering	
Width	: 52"/54" (132 cm/137cm) (LINGUS)
	: 36"/38" (91cm/96cm) (ORIENTA)
Total Weight	: 15.0.oz./lin.yard
Backing	: Woven Cotton Backing
Fire Rated	: Class - "A" Tested In Accordance
	ASTM E-84 Tunnel Test
Tensile Breaking Strength	: 80X75 Pounds
Flame Spread	: 20
Smoke Developed	: 25
Pattern Match	: Random Match
Packaging	: 50 Meter Bolts



US Classification : ASTM-E84 Class - A

CHN Classification : GB8624-2012: Class B

EU Classification : EN 15102 : 2007+A1 : 2011



### Anti Microbial Features:

Water based environmentally friendly inks, free of Cadmium, Mercury and Ozone depleting chemicals.

### Wall Surface Preparations:

The wall surface must be clean, smooth, stable, even and all in one colour before hanging wallpaper. The wall should be dry enough with a maximum of 8% water absorption. If the other side of the wall is in a bathroom, the surface of the wall must be water proof. If the wall is wet of mouldy, the mould needs to be eliminated completely by brushing fungicide on it which will also make it moisture proof.

### Adhesive Applying:

Apply adhesive evenly to the back of the wallpaper, fold and leave it for 5-10 minutes, and let the cloth absorb the adhesive completely. For heavy wallpaper, you can also brush adhesive directly to the wall and wait 5-10 minutes before hanging.

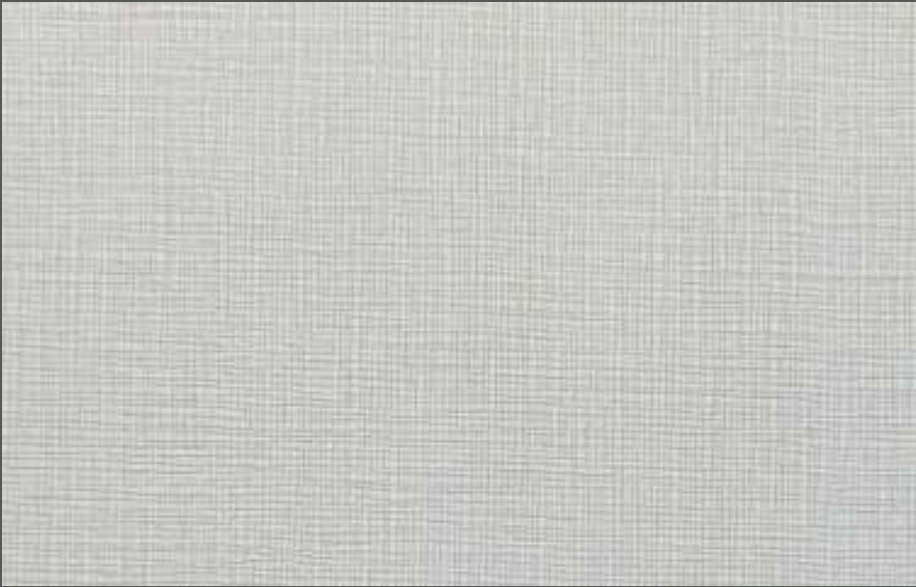
### Hanging :

Start to hang from a corner and use a plumb line to ensure the wallpaper is straight and not leaning to one side, if the corner you started from is not straight, use a wiper board to smooth the wallpaper evenly and gently to remove any bubbles. For heavier wallpaper, use a strong glue for the seams. When applying the second strip, it should be applied to edge of the previous one and make sure the design is matched. For plain wallpapers there is no need to match. Overlap the two strips and use a sharp knife to cut in the middle. To make the cutting line straight, use a steel ruler.



Designed in USA

## LINGUS



W2055-1



W2055-2



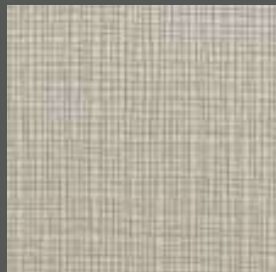
W2055-3



W2055-4



W2055-5



W2055-6



W2055-7

## ORIENTA

## ENVIRONMENTAL WALL COVERING



W4323-1



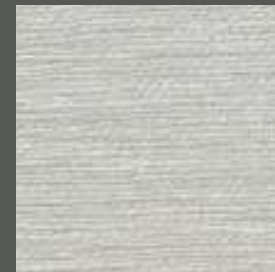
W4323-2



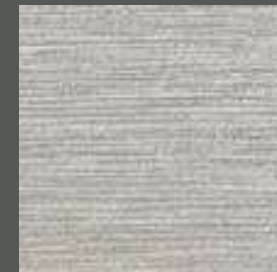
W4323-3



W4323-4



W4323-5



W4323-6



W4323-7





### Product Specifications

Type II, Medium Weight, Class A, Vinyl Coated

Fabric Backed Wallcovering

Width	: 52"/54" (132 cm/137cm)
Total Weight	: 15.0.oz./lin.yard - 466 gr/lin-meter
Backing	: Woven Cotton Backing
Fire Rated	: Class - "A" Tested In Accordance ASTM E-84 Tunnel Test
Tensile Breaking Strength	: 80X75 Pounds
Flame Spread	: 20
Smoke Developed	: 25
Pattern Match	: Random Match
Packaging	: 50 Meter Bolts



US Classification : ASTM-E84 Class - A

CHN Classification : GB8624-2012: Class B

EU Classification : EN 15102 : 2007+A1 : 2011



### Anti Microbial Features:

Water based environmentally friendly inks, free of Cadmium, Mercury and Ozone depleting chemicals.

### Wall Surface Preparations:

The wall surface must be clean, smooth, stable, even and all in one colour before hanging wallpaper. The wall should be dry enough with a maximum of 8% water absorption. If the other side of the wall is in a bathroom, the surface of the wall must be water proof. If the wall is wet of mouldy, the mould needs to be eliminated completely by brushing fungicide on it which will also make it moisture proof.

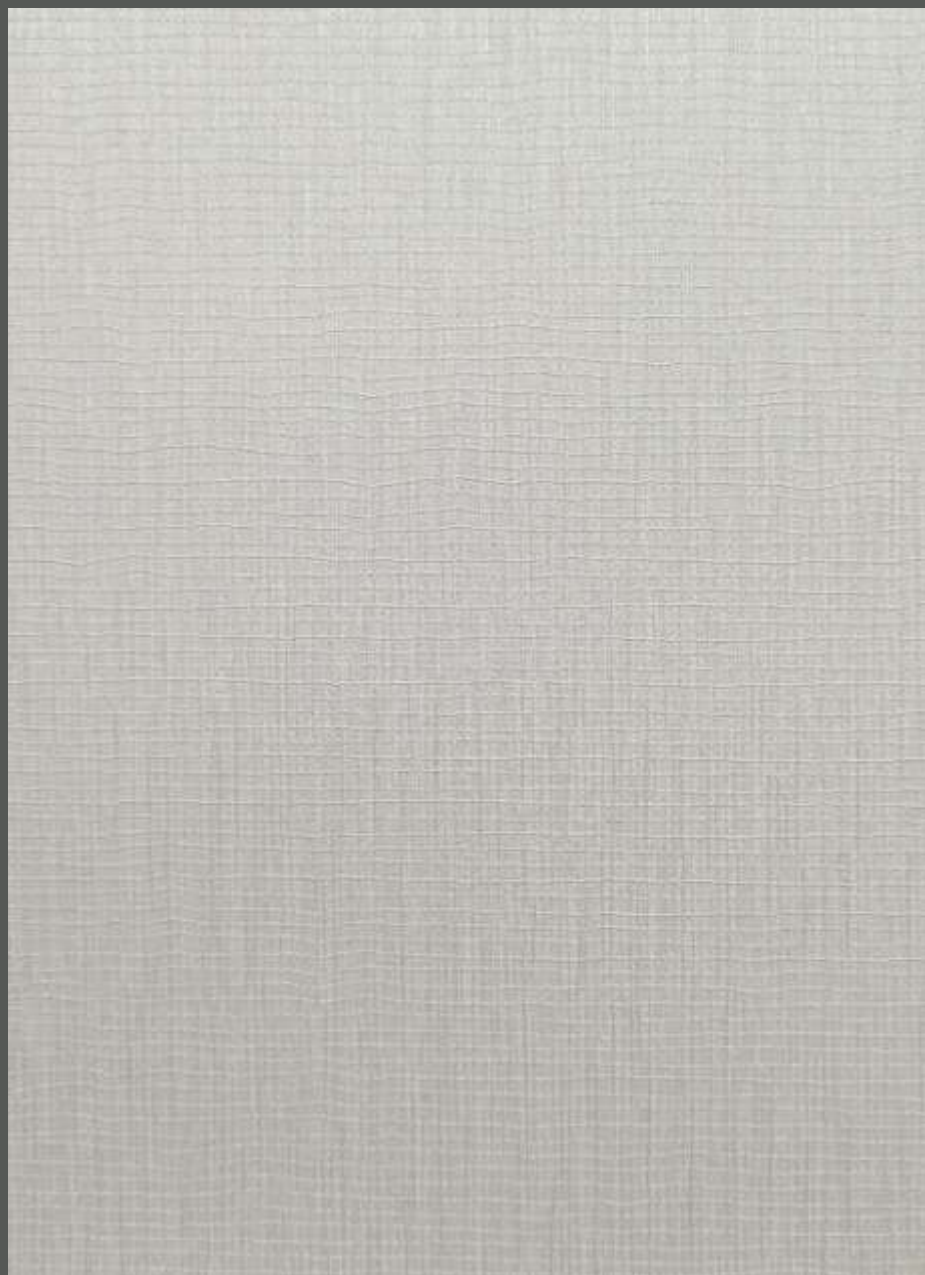
### Adhesive Applying:

Apply adhesive evenly to the back of the wallpaper, fold and leave it for 5-10 minutes, and let the cloth absorb the adhesive completely. For heavy wallpaper, you can also brush adhesive directly to the wall and wait 5-10 minutes before hanging.

### Hanging :

Start to hang from a corner and use a plumb line to ensure the wallpaper is straight and not leaning to one side, if the corner you started from is not straight, use a wiper board to smooth the wallpaper evenly and gently to remove any bubbles. For heavier wallpaper, use a strong glue for the seams. When applying the second strip, it should be applied to edge of the previous one and make sure the design is matched. For plain wallpapers there is no need to match. Overlap the two strips and use a sharp knife to cut in the middle. To make the cutting line straight, use a steel ruler.





W5511-1

ZEBEK

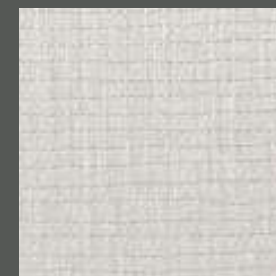
## ENVIRONMENTAL WALL COVERING



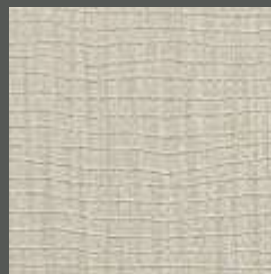
W5511-2



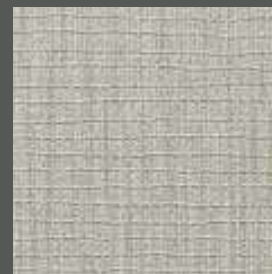
W5511-3



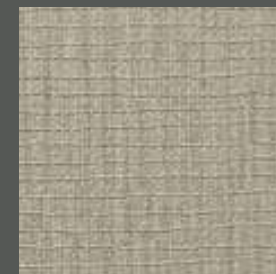
W5511-4



W5511-5



W5511-6



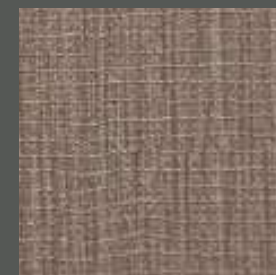
W5511-7



W5511-8



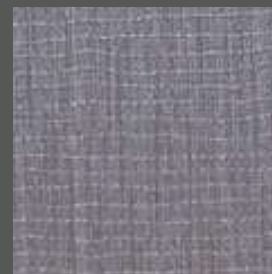
W5511-9



W5511-10



W5511-11



W5511-12



OXFER



EIZER



52"/54" VINYL WALLCOVERINGS

OXFER/EIZER

OXFER/EIZER

### Product Specifications

Type II, Medium Weight, Class A, Vinyl Coated

Fabric Backed Wallcovering

Width : 52"/54" (132 cm/137cm)

Total Weight : 15.0.oz./lin.yard - 466 gr/lin-meter

Backing : Woven Cotton Backing

Fire Rated : Class - "A" Tested In Accordance  
ASTM E-84 Tunnel Test

Tensile Breaking Strength : 80X75 Pounds

Flame Spread : 20

Smoke Developed : 25

Pattern Match : Random Match

Packaging : 50 Meter Bolts



US Classification : ASTM-E84 Class - A

CHN Classification : GB8624-2012: Class B

EU Classification : EN 15102 : 2007+A1 : 2011



### Anti Microbial Features:

Water based environmentally friendly inks, free of Cadmium, Mercury and Ozone depleting chemicals.

### Wall Surface Preparations:

The wall surface must be clean, smooth, stable, even and all in one colour before hanging wallpaper. The wall should be dry enough with a maximum of 8% water absorption. If the other side of the wall is in a bathroom, the surface of the wall must be water proof. If the wall is wet of mouldy, the mould needs to be eliminated completely by brushing fungicide on it which will also make it moisture proof.

### Adhesive Applying:

Apply adhesive evenly to the back of the wallpaper, fold and leave it for 5-10 minutes, and let the cloth absorb the adhesive completely. For heavy wallpaper, you can also brush adhesive directly to the wall and wait 5-10 minutes before hanging.

### Hanging :

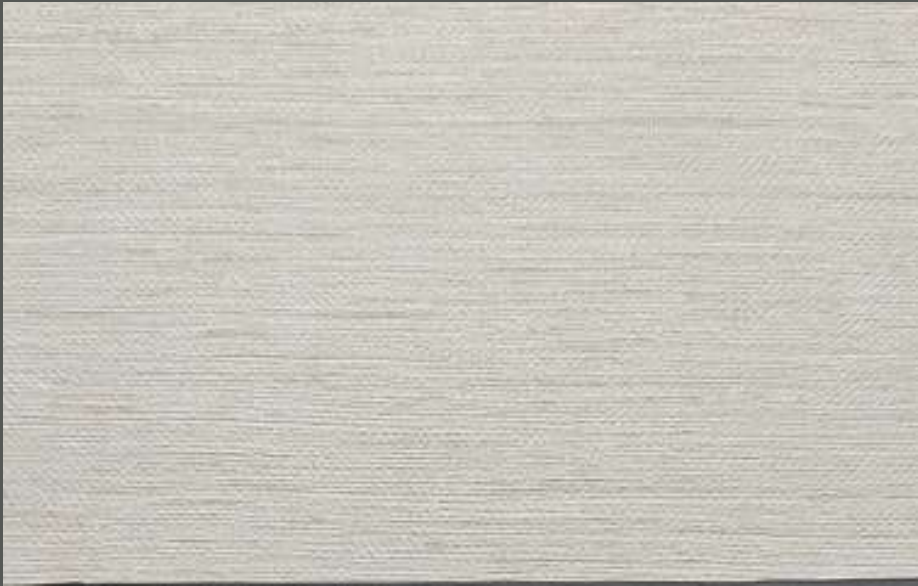
Start to hang from a corner and use a plumb line to ensure the wallpaper is straight and not leaning to one side, if the corner you started from is not straight, use a wiper board to smooth the wallpaper evenly and gently to remove any bubbles. For heavier wallpaper, use a strong glue for the seams. When applying the second strip, it should be applied to edge of the previous one and make sure the design is matched. For plain wallpapers there is no need to match. Overlap the two strips and use a sharp knife to cut in the middle. To make the cutting line straight, use a steel ruler.



Designed in USA



## OXFER



W5999-1



W5999-2



W5999-3



W5999-4



W5999-5



W5999-6



W5999-7

## EIZER

## ENVIRONMENTAL WALL COVERING



W5499-1



W5499-2



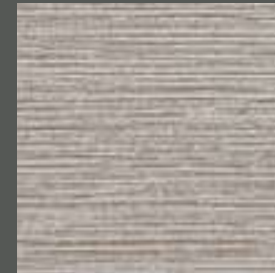
W5499-3



W5499-4



W5499-5



W5499-6



W5499-7



52"/54" VINYL WALLCOVERINGS

### Product Specifications

Type II, Medium Weight, Class A, Vinyl Coated

Fabric Backed Wallcovering

Width	: 52"/54" (132 cm/137cm)
Total Weight	: 15.0.oz./lin.yard - 466 gr/lin-meter
Backing	: Woven Cotton Backing
Fire Rated	: Class - "A" Tested In Accordance ASTM E-84 Tunnel Test
Tensile Breaking Strength	: 80X75 Pounds
Flame Spread	: 20
Smoke Developed	: 25
Pattern Match	: Random Match
Packaging	: 50 Meter Bolts



US Classification : ASTM-E84 Class - A

CHN Classification : GB8624-2012: Class B

EU Classification : EN 15102 : 2007+A1 : 2011



### Anti Microbial Features:

Water based environmentally friendly inks, free of Cadmium. Mercury and Ozone depleting chemicals.

### Wall Surface Preparations:

The wall surface must be clean, smooth, stable, even and all in one colour before hanging wallpaper. The wall should be dry enough with a maximum of 8% water absorption. If the other side of the wall is in a bathroom, the surface of the wall must be water proof. If the wall is wet of mouldy, the mould needs to be eliminated completely by brushing fungicide on it which will also make it moisture proof.

### Adhesive Applying:

Apply adhesive evenly to the back of the wallpaper, fold and leave it for 5-10 minutes, and let the cloth absorb the adhesive completely. For heavy wallpaper, you can also brush adhesive directly to the wall and wait 5-10 minutes before hanging.

### Hanging :

Start to hang from a corner and use a plumb line to ensure the wallpaper is straight and not leaning to one side, if the corner you started from is not straight, use a wiper board to smooth the wallpaper evenly and gently to remove any bubbles. For heavier wallpaper, use a strong glue for the seams. When applying the second strip, it should be applied to edge of the previous one and make sure the design is matched. For plain wallpapers there is no need to match. Overlap the two strips and use a sharp knife to cut in the middle. To make the cutting line straight, use a steel ruler.







W1263-1

ELAS

## ENVIRONMENTAL WALL COVERING



W1263-2



W1263-3



W1263-4



W1263-5



W1263-6



W1263-7



W1263-8



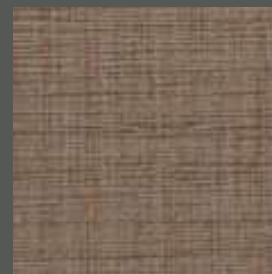
W1263-9



W1263-10



W1263-11



W1263-12



W1263-13

DEXOR



LISON



52"/54" VINYL WALLCOVERINGS

DEXOR/LISON

DEXOR/LISON

### Product Specifications

Type II, Medium Weight, Class A, Vinyl Coated	
Fabric Backed Wallcovering	
Width	: 52"/54" (132 cm/137cm)
Total Weight	: 15.0.oz./lin.yard - 466 gr/lin-meter
Backing	: Woven Cotton Backing
Fire Rated	: Class - "A" Tested In Accordance ASTM E-84 Tunnel Test
Tensile Breaking Strength	: 80X75 Pounds
Flame Spread	: 20
Smoke Developed	: 25
Pattern Match	: Random Match
Packageing	: 50 Meter Bolts



US Classification : ASTM-E84 Class - A

CHN Classification : GB8624-2012: Class B

EU Classification : EN 15102 : 2007+A1 : 2011



### Anti Microbial Features:

Water based environmentally friendly inks, free of Cadmium, Mercury and Ozone depleting chemicals.

### Wall Surface Preparations:

The wall surface must be clean, smooth, stable, even and all in one colour before hanging wallpaper. The wall should be dry enough with a maximum of 8% water absorption. If the other side of the wall is in a bathroom, the surface of the wall must be water proof. If the wall is wet of mouldy, the mould needs to be eliminated completely by brushing fungicide on it which will also make it moisture proof.

### Adhesive Applying:

Apply adhesive evenly to the back of the wallpaper, fold and leave it for 5-10 minutes, and let the cloth absorb the adhesive completely. For heavy wallpaper, you can also brush adhesive directly to the wall and wait 5-10 minutes before hanging.

### Hanging :

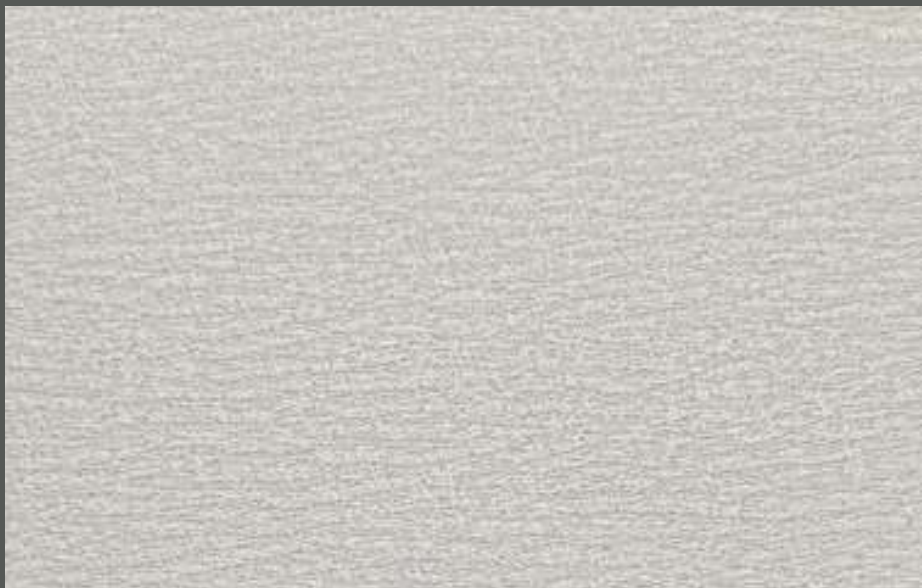
Start to hang from a corner and use a plumb line to ensure the wallpaper is straight and not leaning to one side, if the corner you started from is not straight, use a wiper board to smooth the wallpaper evenly and gently to remove any bubbles. For heavier wallpaper, use a strong glue for the seams. When applying the second strip, it should be applied to edge of the previous one and make sure the design is matched. For plain wallpapers there is no need to match. Overlap the two strips and use a sharp knife to cut in the middle. To make the cutting line straight, use a steel ruler.



Designed in USA



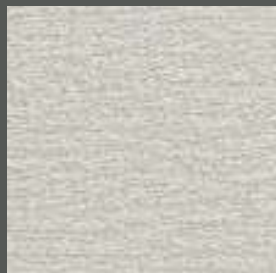
## DEXOR



W3191-1



W3191-2



W3191-3



W3191-4



W3191-5



W3191-6



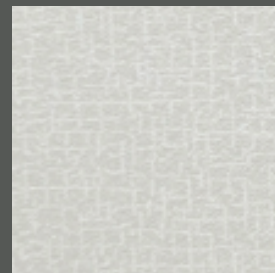
W3191-7

## LISON

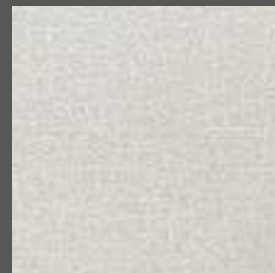
## ENVIRONMENTAL WALL COVERING



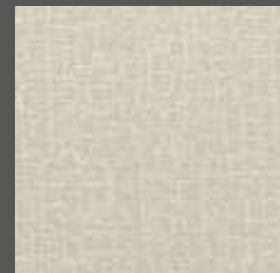
W2053-1



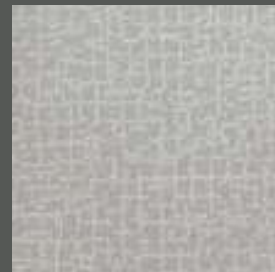
W2053-2



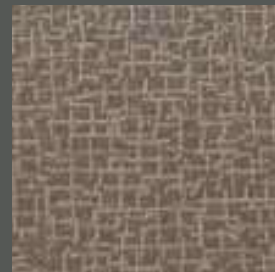
W2053-3



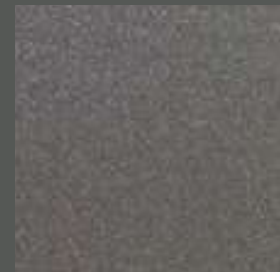
W2053-4



W2053-5



W2053-6



W2053-7



52"/54" VINYL WALLCOVERINGS

## Product Specifications

Type II, Medium Weight, Class A, Vinyl Coated

Fabric Backed Wallcovering

Width : 52"/54" (132 cm/137cm)

Total Weight : 15.0.oz./lin.yard - 466 gr/lin-meter

Backing : Woven Cotton Backing

Fire Rated : Class - "A" Tested In Accordance  
ASTM E-84 Tunnel Test

Tensile Breaking Strength : 80X75 Pounds

Flame Spread : 20

Smoke Developed : 25

Pattern Match : Random Match

Packaging : 50 Meter Bolts



US Classification : ASTM-E84 Class - A

CHN Classification : GB8624-2012: Class B

EU Classification : EN 15102 : 2007+A1 : 2011



## Anti Microbial Features:

Water based environmentally friendly inks, free of Cadmium, Mercury and Ozone depleting chemicals.

## Wall Surface Preparations:

The wall surface must be clean, smooth, stable, even and all in one colour before hanging wallpaper. The wall should be dry enough with a maximum of 8% water absorption. If the other side of the wall is in a bathroom, the surface of the wall must be water proof. If the wall is wet of mouldy, the mould needs to be eliminated completely by brushing fungicide on it which will also make it moisture proof.

## Adhesive Applying:

Apply adhesive evenly to the back of the wallpaper, fold and leave it for 5-10 minutes, and let the cloth absorb the adhesive completely. For heavy wallpaper, you can also brush adhesive directly to the wall and wait 5-10 minutes before hanging.

## Hanging :

Start to hang from a corner and use a plumb line to ensure the wallpaper is straight and not leaning to one side, if the corner you started from is not straight, use a wiper board to smooth the wallpaper evenly and gently to remove any bubbles. For heavier wallpaper, use a strong glue for the seams. When applying the second strip, it should be applied to edge of the previous one and make sure the design is matched. For plain wallpapers there is no need to match. Overlap the two strips and use a sharp knife to cut in the middle. To make the cutting line straight, use a steel ruler.







W3616-1

ICONIC

## ENVIRONMENTAL WALL COVERING



W3616-2



W3616-3



W3616-4



W3616-5



W3616-6



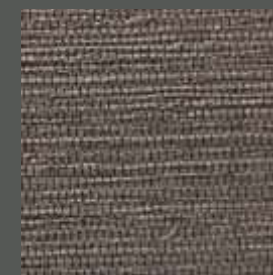
W3616-7



W3616-8



W3616-9



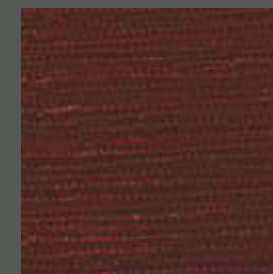
W3616-10



W3616-11



W3616-12



W3616-13

AZOTIC



FOLICA



34"/36" VINYL WALLCOVERINGS

AZOTIC/FOLICA

AZOTIC/FOLICA

### Product Specifications

Type II, Medium Weight, Class A, Vinyl Coated	
Fabric Backed Wallcovering	
Width	: 34"/36" (86cm/91cm)
Total Weight	: 15.0.oz./lin.yard -315 gr/lin-meter
Backing	: Woven Cotton Backing
Fire Rated	: Class - "A" Tested In Accordance ASTM E-84 Tunnel Test
Tensile Breaking Strength	: 80X75 Pounds
Flame Spread	: 20
Smoke Developed	: 25
Pattern Match	: Random Match
Packaging	: 50 Meter Bolts



US Classification : ASTM-E84 Class - A

CHN Classification : GB8624-2012: Class B

EU Classification : EN 15102 : 2007+A1 : 2011



### Anti Microbial Features:

Water based environmentally friendly inks, free of Cadmium. Mercury and Ozone depleting chemicals.

### Wall Surface Preparations:

The wall surface must be clean, smooth, stable, even and all in one colour before hanging wallpaper. The wall should be dry enough with a maximum of 8% water absorption. If the other side of the wall is in a bathroom, the surface of the wall must be water proof. If the wall is wet of mouldy, the mould needs to be eliminated completely by brushing fungicide on it which will also make it moisture proof.

### Adhesive Applying:

Apply adhesive evenly to the back of the wallpaper, fold and leave it for 5-10 minutes, and let the cloth absorb the adhesive completely. For heavy wallpaper, you can also brush adhesive directly to the wall and wait 5-10 minutes before hanging.

### Hanging :

Start to hang from a corner and use a plumb line to ensure the wallpaper is straight and not leaning to one side, if the corner you started from is not straight, use a wiper board to smooth the wallpaper evenly and gently to remove any bubbles. For heavier wallpaper, use a strong glue for the seams. When applying the second strip, it should be applied to edge of the previous one and make sure the design is matched. For plain wallpapers there is no need to match. Overlap the two strips and use a sharp knife to cut in the middle. To make the cutting line straight, use a steel ruler.



Designed in USA



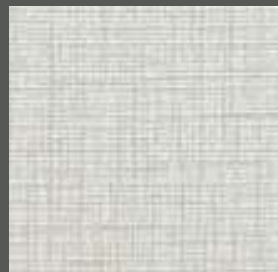
## AZOTIC



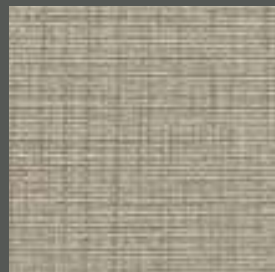
W5710-1



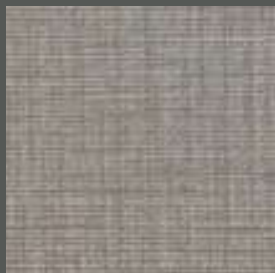
W5710-2



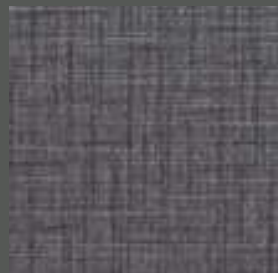
W5710-3



W5710-4



W5710-5



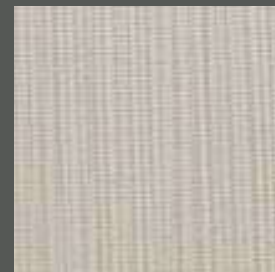
W5710-6

## FOLICA

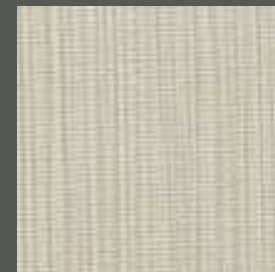
## ENVIRONMENTAL WALL COVERING



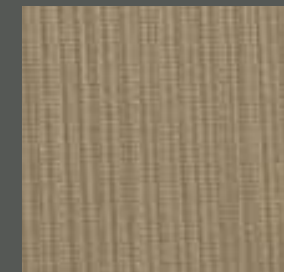
W5773-1



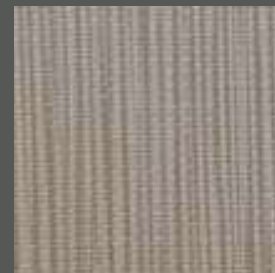
W5773-2



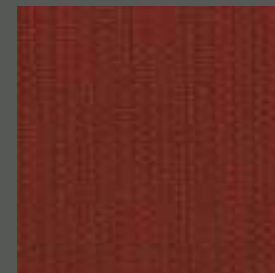
W5773-3



W5773-4



W5773-5



W5773-6





52"/54" VINYL WALLCOVERINGS

WARSA

### Product Specifications

Type II, Medium Weight, Class A, Vinyl Coated

Fabric Backed Wallcovering

Width	: 52"/54" (132 cm/137cm)
Total Weight	: 15.0.oz./lin.yard - 466 gr/lin-meter
Backing	: Woven Cotton Backing
Fire Rated	: Class - "A" Tested In Accordance ASTM E-84 Tunnel Test
Tensile Breaking Strength	: 80X75 Pounds
Flame Spread	: 20
Smoke Developed	: 25
Pattern Match	: Random Match
Packaging	: 50 Meter Bolts



US Classification : ASTM-E84 Class - A

CHN Classification : GB8624-2012: Class B

EU Classification : EN 15102 : 2007+A1 : 2011



### Anti Microbial Features:

Water based environmentally friendly inks, free of Cadmium. Mercury and Ozone depleting chemicals.

### Wall Surface Preparations:

The wall surface must be clean, smooth, stable, even and all in one colour before hanging wallpaper. The wall should be dry enough with a maximum of 8% water absorption. If the other side of the wall is in a bathroom, the surface of the wall must be water proof. If the wall is wet of mouldy, the mould needs to be eliminated completely by brushing fungicide on it which will also make it moisture proof.

### Adhesive Applying:

Apply adhesive evenly to the back of the wallpaper, fold and leave it for 5-10 minutes, and let the cloth absorb the adhesive completely. For heavy wallpaper, you can also brush adhesive directly to the wall and wait 5-10 minutes before hanging.

### Hanging :

Start to hang from a corner and use a plumb line to ensure the wallpaper is straight and not leaning to one side, if the corner you started from is not straight, use a wiper board to smooth the wallpaper evenly and gently to remove any bubbles. For heavier wallpaper, use a strong glue for the seams. When applying the second strip, it should be applied to edge of the previous one and make sure the design is matched. For plain wallpapers there is no need to match. Overlap the two strips and use a sharp knife to cut in the middle. To make the cutting line straight, use a steel ruler.



Designed in USA



W5121-1

WARSA

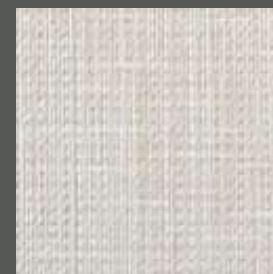
## ENVIRONMENTAL WALL COVERING



W5121-2



W5121-3



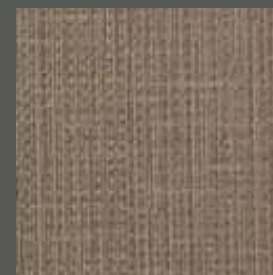
W5121-4



W5121-5



W5121-6



W5121-7



W5121-8



W5121-9



W5121-10



ELICH



CHELCY



52"/54" VINYL WALLCOVERINGS

ELICH/CHELCY

ELICH/CHELCY

### Product Specifications

Type II, Medium Weight, Class A, Vinyl Coated

Fabric Backed Wallcovering

Width : 52"/54" (132 cm/137cm)

Total Weight : 15.0.oz./lin.yard - 466 gr/lin-meter

Backing : Woven Cotton Backing

Fire Rated : Class - "A" Tested In Accordance  
ASTM E-84 Tunnel Test

Tensile Breaking Strength : 80X75 Pounds

Flame Spread : 20

Smoke Developed : 25

Pattern Match : Random Match

Packaging : 50 Meter Bolts



US Classification : ASTM-E84 Class - A

CHN Classification : GB8624-2012: Class B

EU Classification : EN 15102 : 2007+A1 : 2011



Free Match



Straight Match



Extra Washable



Paste the Wall



Colour Fastness

### Anti Microbial Features:

Water based environmentally friendly inks, free of Cadmium, Mercury and Ozone depleting chemicals.

### Wall Surface Preparations:

The wall surface must be clean, smooth, stable, even and all in one colour before hanging wallpaper. The wall should be dry enough with a maximum of 8% water absorption. If the other side of the wall is in a bathroom, the surface of the wall must be water proof. If the wall is wet of mouldy, the mould needs to be eliminated completely by brushing fungicide on it which will also make it moisture proof.

### Adhesive Applying:

Apply adhesive evenly to the back of the wallpaper, fold and leave it for 5-10 minutes, and let the cloth absorb the adhesive completely. For heavy wallpaper, you can also brush adhesive directly to the wall and wait 5-10 minutes before hanging.

### Hanging :

Start to hang from a corner and use a plumb line to ensure the wallpaper is straight and not leaning to one side, if the corner you started from is not straight, use a wiper board to smooth the wallpaper evenly and gently to remove any bubbles. For heavier wallpaper, use a strong glue for the seams. When applying the second strip, it should be applied to edge of the previous one and make sure the design is matched. For plain wallpapers there is no need to match. Overlap the two strips and use a sharp knife to cut in the middle. To make the cutting line straight, use a steel ruler.



Water Resistant



RECYCLE



FSC FRIENDLY



GREENGUARD  
Indoor Air Quality Certified

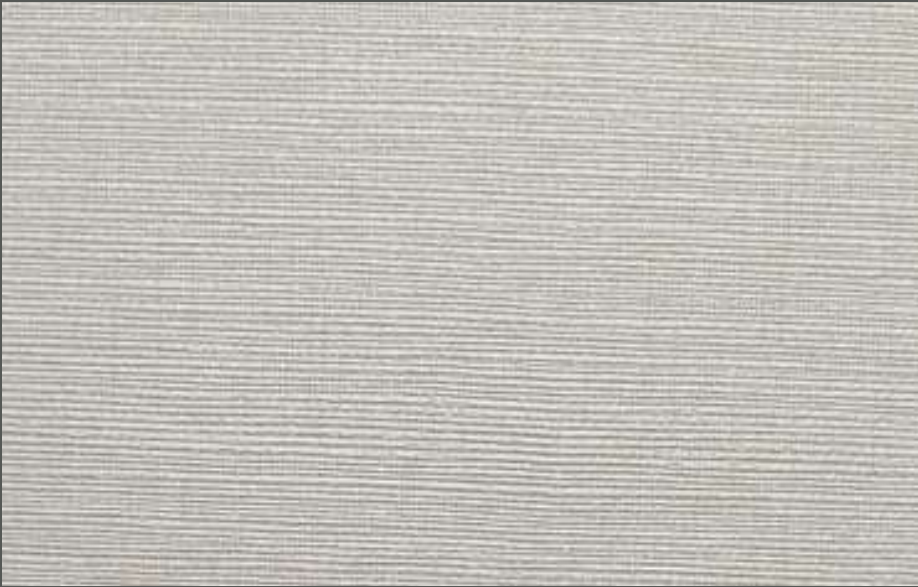


RECORE  
RECYCLED WALL TECHNOLOGY

Designed in USA



## ELICH



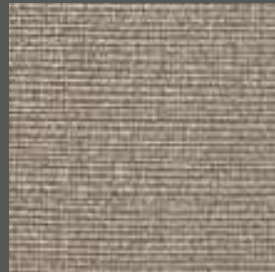
W2012-1



W2012-2



W2012-3



W2012-4



W2012-5



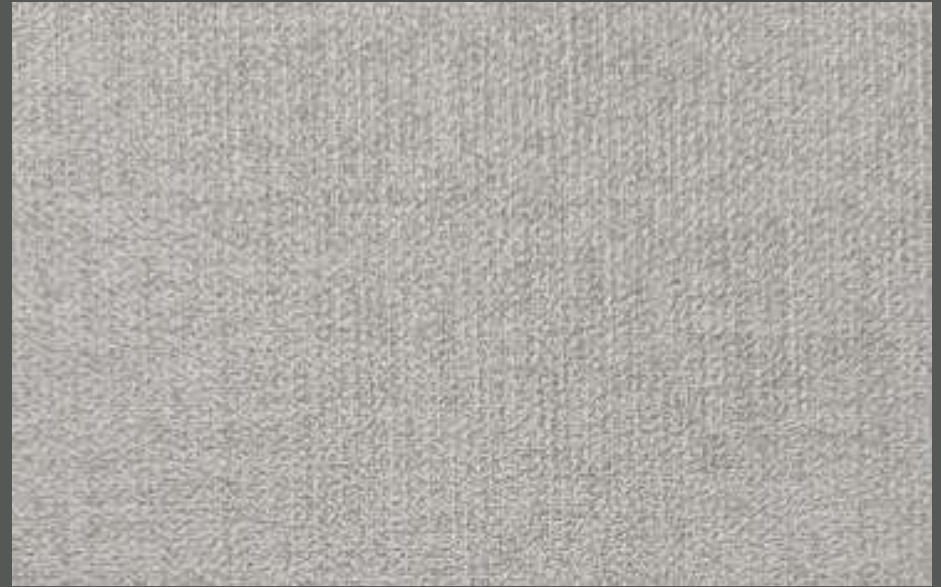
W2012-6



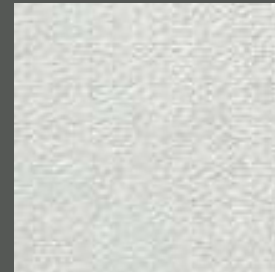
W2012-7

## CHELCY

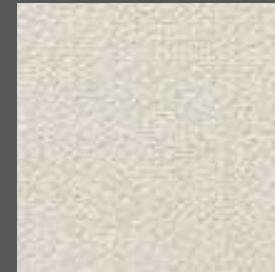
## ENVIRONMENTAL WALL COVERING



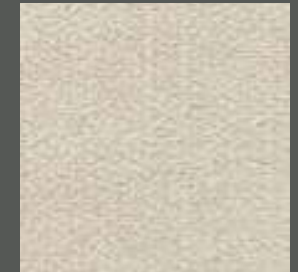
W2032-1



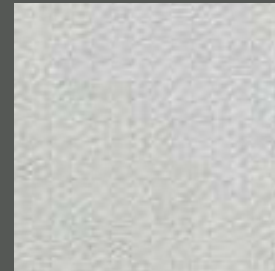
W2032-2



W2032-3



W2032-4



W2032-5



W2032-6



W2032-7



52"/54" VINYL WALLCOVERINGS

## Product Specifications

Type II, Medium Weight, Class A, Vinyl Coated

Fabric Backed Wallcovering

Width	: 52"/54" (132 cm/137cm)
Total Weight	: 15.0.oz./lin.yard - 466 gr/lin-meter
Backing	: Woven Cotton Backing
Fire Rated	: Class - "A" Tested In Accordance ASTM E-84 Tunnel Test
Tensile Breaking Strength	: 80X75 Pounds
Flame Spread	: 20
Smoke Developed	: 25
Pattern Match	: Random Match
Packaging	: 50 Meter Bolts



US Classification : ASTM-E84 Class - A

CHN Classification : GB8624-2012: Class B

EU Classification : EN 15102 : 2007+A1 : 2011



## Anti Microbial Features:

Water based environmentally friendly inks, free of Cadmium. Mercury and Ozone depleting chemicals.

## Wall Surface Preparations:

The wall surface must be clean, smooth, stable, even and all in one colour before hanging wallpaper. The wall should be dry enough with a maximum of 8% water absorption. If the other side of the wall is in a bathroom, the surface of the wall must be water proof. If the wall is wet of mouldy, the mould needs to be eliminated completely by brushing fungicide on it which will also make it moisture proof.

## Adhesive Applying:

Apply adhesive evenly to the back of the wallpaper, fold and leave it for 5-10 minutes, and let the cloth absorb the adhesive completely. For heavy wallpaper, you can also brush adhesive directly to the wall and wait 5-10 minutes before hanging.

## Hanging :

Start to hang from a corner and use a plumb line to ensure the wallpaper is straight and not leaning to one side, if the corner you started from is not straight, use a wiper board to smooth the wallpaper evenly and gently to remove any bubbles. For heavier wallpaper, use a strong glue for the seams. When applying the second strip, it should be applied to edge of the previous one and make sure the design is matched. For plain wallpapers there is no need to match. Overlap the two strips and use a sharp knife to cut in the middle. To make the cutting line straight, use a steel ruler.







W1132-1

HORISUN

## ENVIRONMENTAL WALL COVERING



W1132-2



W1132-3



W1132-4



W1132-5



W1132-6



W1132-7



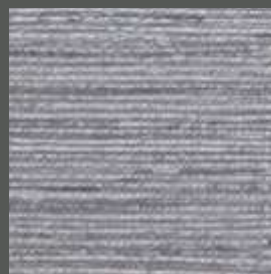
W1132-8



W1132-9



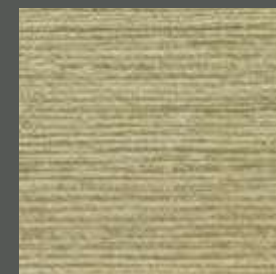
W1132-10



W1132-11



W1132-12

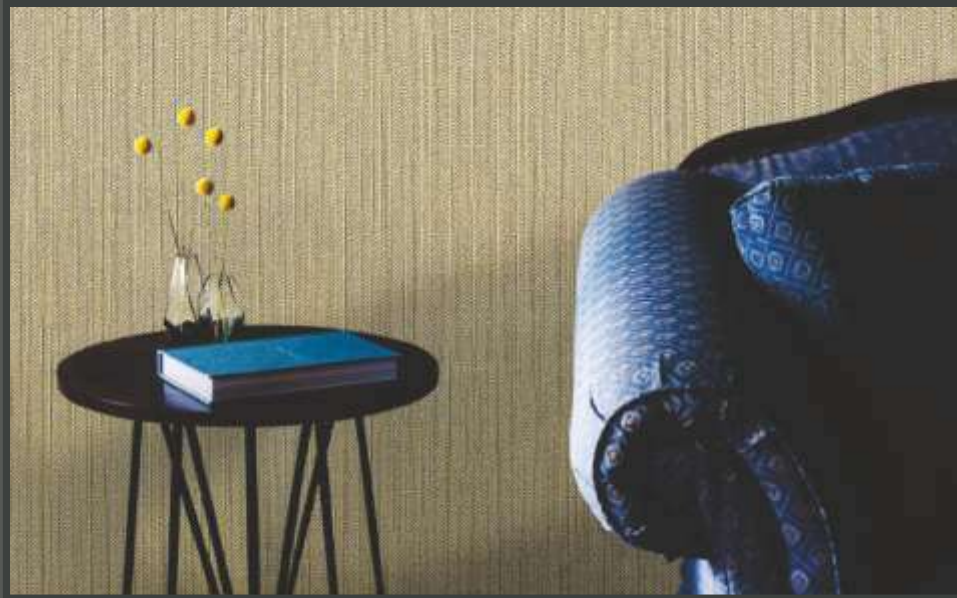


W1132-13

## RELINER



## BARLIN



52"/54" VINYL WALLCOVERINGS

RELINER/BARLIN

## RELINER/BARLIN

### Product Specifications

Type II, Medium Weight, Class A, Vinyl Coated

Fabric Backed Wallcovering

Width : 52"/54" (132 cm/137cm)

Total Weight : 15.0.oz./lin.yard - 466 gr/lin-meter

Backing : Woven Cotton Backing

Fire Rated : Class - "A" Tested In Accordance  
ASTM E-84 Tunnel Test

Tensile Breaking Strength : 80X75 Pounds

Flame Spread : 20

Smoke Developed : 25

Pattern Match : Random Match

Packaging : 50 Meter Bolts



US Classification : ASTM-E84 Class - A

CHN Classification : GB8624-2012: Class B

EU Classification : EN 15102 : 2007+A1 : 2011



### Anti Microbial Features:

Water based environmentally friendly inks, free of Cadmium, Mercury and Ozone depleting chemicals.

### Wall Surface Preparations:

The wall surface must be clean, smooth, stable, even and all in one colour before hanging wallpaper. The wall should be dry enough with a maximum of 8% water absorption. If the other side of the wall is in a bathroom, the surface of the wall must be water proof. If the wall is wet of mouldy, the mould needs to be eliminated completely by brushing fungicide on it which will also make it moisture proof.

### Adhesive Applying:

Apply adhesive evenly to the back of the wallpaper, fold and leave it for 5-10 minutes, and let the cloth absorb the adhesive completely. For heavy wallpaper, you can also brush adhesive directly to the wall and wait 5-10 minutes before hanging.

### Hanging :

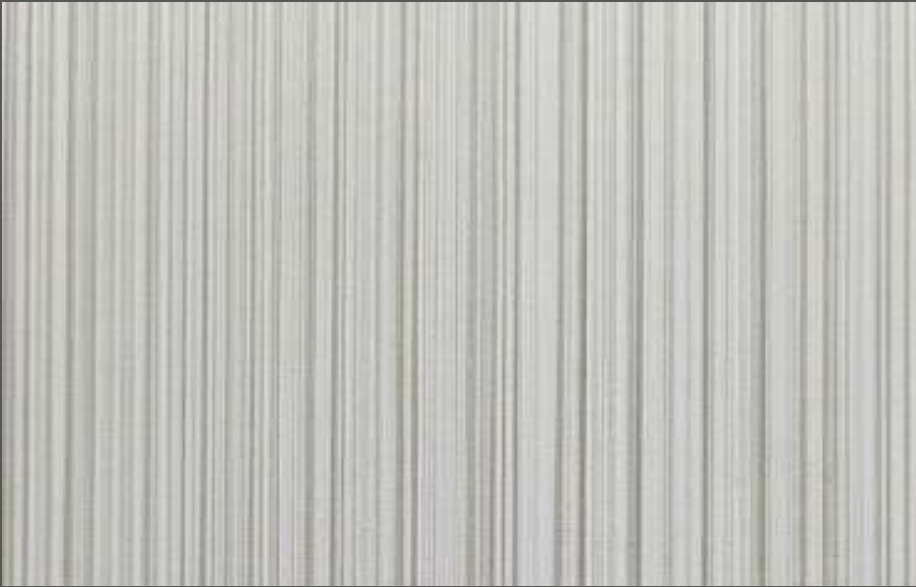
Start to hang from a corner and use a plumb line to ensure the wallpaper is straight and not leaning to one side, if the corner you started from is not straight, use a wiper board to smooth the wallpaper evenly and gently to remove any bubbles. For heavier wallpaper, use a strong glue for the seams. When applying the second strip, it should be applied to edge of the previous one and make sure the design is matched. For plain wallpapers there is no need to match. Overlap the two strips and use a sharp knife to cut in the middle. To make the cutting line straight, use a steel ruler.



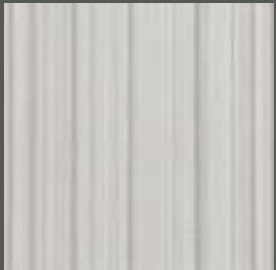
Designed in USA



## RELINER



W1118-1



W1118-2



W1118-3



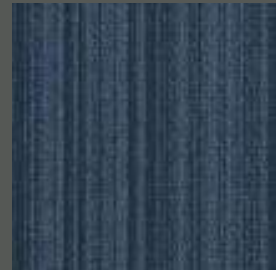
W1118-4



W1118-5

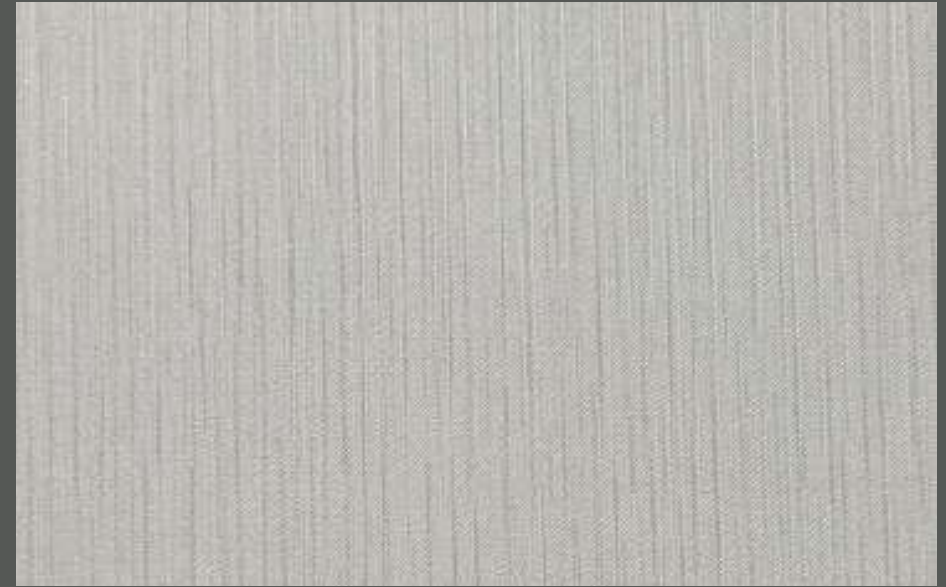


W1118-6

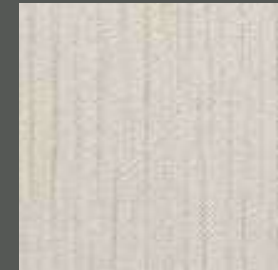


W1118-7

## BARLIN



W2071-1



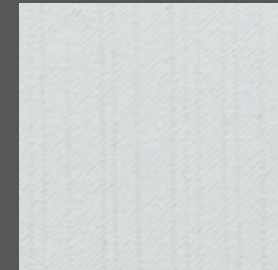
W2071-2



W2071-3



W2071-4



W2071-5



W2071-6



W2071-7

## ENVIRONMENTAL WALL COVERING



52"/54" VINYL WALLCOVERINGS

COLSUN

Product Specifications

Type II, Medium Weight, Class A, Vinyl Coated	
Fabric Backed Wallcovering	
Width	: 52"/54" (132 cm/137cm)
Total Weight	: 15.0.oz./lin.yard - 466 gr/lin-meter
Backing	: Woven Cotton Backing
Fire Rated	: Class - "A" Tested In Accordance ASTM E-84 Tunnel Test
Tensile Breaking Strength	: 80X75 Pounds
Flame Spread	: 20
Smoke Developed	: 25
Pattern Match	: Random Match
Packaging	: 50 Meter Bolts



US Classification : ASTM-E84 Class - A

CHN Classification : GB8624-2012: Class B

EU Classification : EN 15102 : 2007+A1 : 2011



Anti Microbial Features:

Water based environmentally friendly inks, free of Cadmium. Mercury and Ozone depleting chemicals.

Wall Surface Preparations:

The wall surface must be clean, smooth, stable, even and all in one colour before hanging wallpaper. The wall should be dry enough with a maximum of 8% water absorption. If the other side of the wall is in a bathroom, the surface of the wall must be water proof. If the wall is wet of mouldy, the mould needs to be eliminated completely by brushing fungicide on it which will also make it moisture proof.

Adhesive Applying:

Apply adhesive evenly to the back of the wallpaper, fold and leave it for 5-10 minutes, and let the cloth absorb the adhesive completely. For heavy wallpaper, you can also brush adhesive directly to the wall and wait 5-10 minutes before hanging.

Hanging :

Start to hang from a corner and use a plumb line to ensure the wallpaper is straight and not leaning to one side, if the corner you started from is not straight, use a wiper board to smooth the wallpaper evenly and gently to remove any bubbles. For heavier wallpaper, use a strong glue for the seams. When applying the second strip, it should be applied to edge of the previous one and make sure the design is matched. For plain wallpapers there is no need to match. Overlap the two strips and use a sharp knife to cut in the middle. To make the cutting line straight, use a steel ruler.







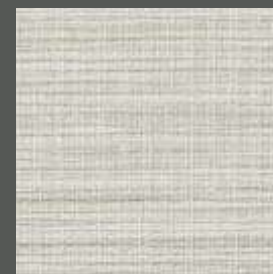
W1252-1

COLSUN

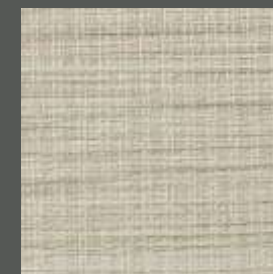
## ENVIRONMENTAL WALL COVERING



W1252-2



W1252-3



W1252-4



W1252-5



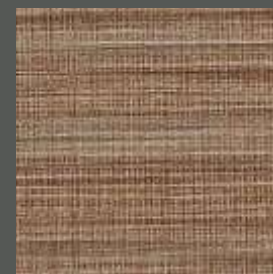
W1252-6



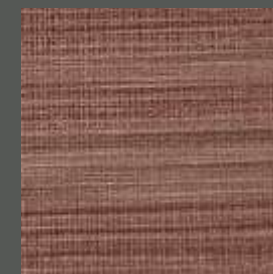
W1252-7



W1252-8



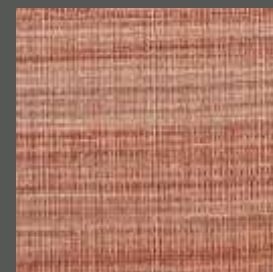
W1252-9



W1252-10



W1252-11



W1252-12



W1252-13

ALISON



LINCY



52"/54" VINYL WALLCOVERINGS

ALISON/LINCY

ALISON/LINCY

### Product Specifications

Type II, Medium Weight, Class A, Vinyl Coated	
Fabric Backed Wallcovering	
Width	: 52"/54" (132 cm/137cm)
Total Weight	: 15.0.oz./lin.yard - 466 gr/lin-meter
Backing	: Woven Cotton Backing
Fire Rated	: Class - "A" Tested In Accordance ASTM E-84 Tunnel Test
Tensile Breaking Strength	: 80X75 Pounds
Flame Spread	: 20
Smoke Developed	: 25
Pattern Match	: Random Match
Packaging	: 50 Meter Bolts



US Classification : ASTM-E84 Class - A

CHN Classification : GB8624-2012: Class B

EU Classification : EN 15102 : 2007+A1 : 2011



### Anti Microbial Features:

Water based environmentally friendly inks, free of Cadmium. Mercury and Ozone depleting chemicals.

### Wall Surface Preparations:

The wall surface must be clean, smooth, stable, even and all in one colour before hanging wallpaper. The wall should be dry enough with a maximum of 8% water absorption. If the other side of the wall is in a bathroom, the surface of the wall must be water proof. If the wall is wet of mouldy, the mould needs to be eliminated completely by brushing fungicide on it which will also make it moisture proof.

### Adhesive Applying:

Apply adhesive evenly to the back of the wallpaper, fold and leave it for 5-10 minutes, and let the cloth absorb the adhesive completely. For heavy wallpaper, you can also brush adhesive directly to the wall and wait 5-10 minutes before hanging.

### Hanging :

Start to hang from a corner and use a plumb line to ensure the wallpaper is straight and not leaning to one side, if the corner you started from is not straight, use a wiper board to smooth the wallpaper evenly and gently to remove any bubbles. For heavier wallpaper, use a strong glue for the seams. When applying the second strip, it should be applied to edge of the previous one and make sure the design is matched. For plain wallpapers there is no need to match. Overlap the two strips and use a sharp knife to cut in the middle. To make the cutting line straight, use a steel ruler.



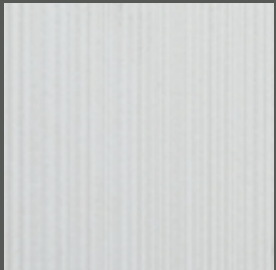
Designed in USA



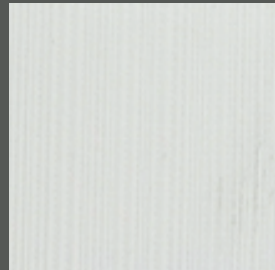
## ALISON



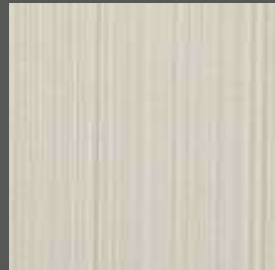
W5666-1



W5666-2



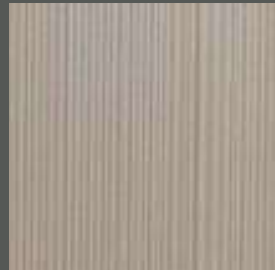
W5666-3



W5666-4



W5666-5



W5666-6

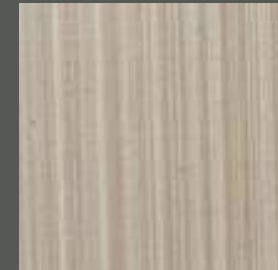


W5666-7

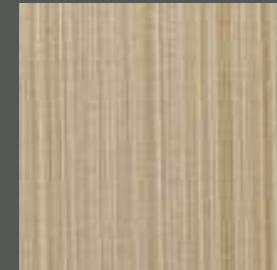
## LINCY



W3711-1



W3711-2



W3711-3



W3711-4



W3711-5



W3711-6



W3711-7

## ENVIRONMENTAL WALL COVERING



52"/54" VINYL WALLCOVERINGS

### Product Specifications

Type II, Medium Weight, Class A, Vinyl Coated

Fabric Backed Wallcovering

Width : 52"/54" (132 cm/137cm)

Total Weight : 15.0.oz./lin.yard - 466 gr/lin-meter

Backing : Woven Cotton Backing

Fire Rated : Class - "A" Tested In Accordance  
ASTM E-84 Tunnel Test

Tensile Breaking Strength : 80X75 Pounds

Flame Spread : 20

Smoke Developed : 25

Pattern Match : Random Match

Packaging : 50 Meter Bolts



US Classification : ASTM-E84 Class - A

CHN Classification : GB8624-2012: Class B

EU Classification : EN 15102 : 2007+A1 : 2011



### Anti Microbial Features:

Water based environmentally friendly inks, free of Cadmium, Mercury and Ozone depleting chemicals.

### Wall Surface Preparations:

The wall surface must be clean, smooth, stable, even and all in one colour before hanging wallpaper. The wall should be dry enough with a maximum of 8% water absorption. If the other side of the wall is in a bathroom, the surface of the wall must be water proof. If the wall is wet of mouldy, the mould needs to be eliminated completely by brushing fungicide on it which will also make it moisture proof.

### Adhesive Applying:

Apply adhesive evenly to the back of the wallpaper, fold and leave it for 5-10 minutes, and let the cloth absorb the adhesive completely. For heavy wallpaper, you can also brush adhesive directly to the wall and wait 5-10 minutes before hanging.

### Hanging :

Start to hang from a corner and use a plumb line to ensure the wallpaper is straight and not leaning to one side, if the corner you started from is not straight, use a wiper board to smooth the wallpaper evenly and gently to remove any bubbles. For heavier wallpaper, use a strong glue for the seams. When applying the second strip, it should be applied to edge of the previous one and make sure the design is matched. For plain wallpapers there is no need to match. Overlap the two strips and use a sharp knife to cut in the middle. To make the cutting line straight, use a steel ruler.







W3101-1

QBECK

## ENVIRONMENTAL WALL COVERING



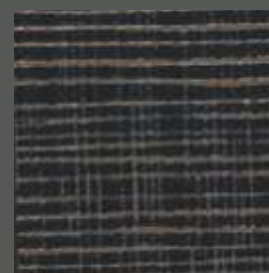
W3101-2



W3101-5



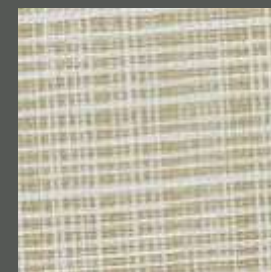
W3101-8



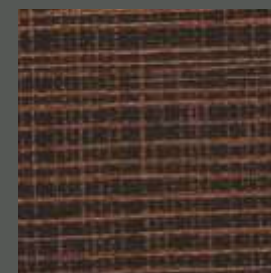
W3101-11



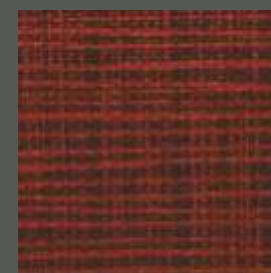
W3101-3



W3101-6



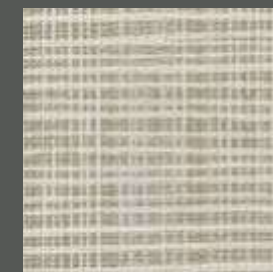
W3101-9



W3101-12



W3101-4



W3101-7



W3101-10

BRISUN



VALIS



52"/54" VINYL WALLCOVERINGS

BRISUN/VALIS

BRISUN/VALIS

### Product Specifications

Type II, Medium Weight, Class A, Vinyl Coated	
Fabric Backed Wallcovering	
Width	: 52"/54" (132 cm/137cm)
Total Weight	: 15.0.oz./lin.yard - 466 gr/lin-meter
Backing	: Woven Cotton Backing
Fire Rated	: Class - "A" Tested In Accordance ASTM E-84 Tunnel Test
Tensile Breaking Strength	: 80X75 Pounds
Flame Spread	: 20
Smoke Developed	: 25
Pattern Match	: Random Match
Packaging	: 50 Meter Bolts



US Classification : ASTM-E84 Class - A

CHN Classification : GB8624-2012: Class B

EU Classification : EN 15102 : 2007+A1 : 2011



### Anti Microbial Features:

Water based environmentally friendly inks, free of Cadmium. Mercury and Ozone depleting chemicals.

### Wall Surface Preparations:

The wall surface must be clean, smooth, stable, even and all in one colour before hanging wallpaper. The wall should be dry enough with a maximum of 8% water absorption. If the other side of the wall is in a bathroom, the surface of the wall must be water proof. If the wall is wet of mouldy, the mould needs to be eliminated completely by brushing fungicide on it which will also make it moisture proof.

### Adhesive Applying:

Apply adhesive evenly to the back of the wallpaper, fold and leave it for 5-10 minutes, and let the cloth absorb the adhesive completely. For heavy wallpaper, you can also brush adhesive directly to the wall and wait 5-10 minutes before hanging.

### Hanging :

Start to hang from a corner and use a plumb line to ensure the wallpaper is straight and not leaning to one side, if the corner you started from is not straight, use a wiper board to smooth the wallpaper evenly and gently to remove any bubbles. For heavier wallpaper, use a strong glue for the seams. When applying the second strip, it should be applied to edge of the previous one and make sure the design is matched. For plain wallpapers there is no need to match. Overlap the two strips and use a sharp knife to cut in the middle. To make the cutting line straight, use a steel ruler.



Designed in USA



## BRISUN



W1187-1



W1187-2



W1187-3



W1187-4



W1187-5



W1187-6



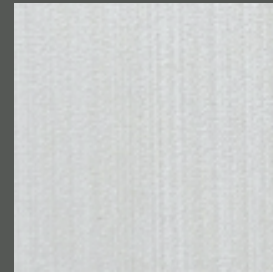
W1187-7

## VALIS

## ENVIRONMENTAL WALL COVERING



W5881-1



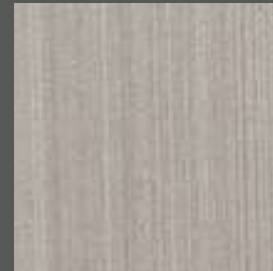
W5881-2



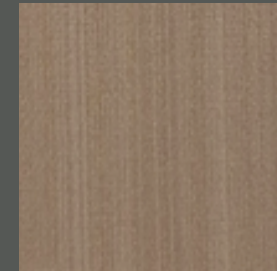
W5881-3



W5881-4



W5881-5



W5881-6



52"/54" VINYL WALLCOVERINGS

## Product Specifications

Type II, Medium Weight, Class A, Vinyl Coated	
Fabric Backed Wallcovering	
Width	: 52"/54" (132 cm/137cm)
Total Weight	: 20.0.oz./lin.yard - 615 gr/lin-meter
Backing	: Woven Cotton Backing
Fire Rated	: Class - "A" Tested In Accordance ASTM E-84 Tunnel Test
Tensile Breaking Strength	: 80X75 Pounds
Flame Spread	: 20
Smoke Developed	: 25
Pattern Match	: Random Match
Packaging	: 50 Meter Bolts



US Classification : ASTM-E84 Class - A

CHN Classification : GB8624-2012: Class B

EU Classification : EN 15102 : 2007+A1 : 2011



## Anti Microbial Features:

Water based environmentally friendly inks, free of Cadmium. Mercury and Ozone depleting chemicals.

## Wall Surface Preparations:

The wall surface must be clean, smooth, stable, even and all in one colour before hanging wallpaper. The wall should be dry enough with a maximum of 8% water absorption. If the other side of the wall is in a bathroom, the surface of the wall must be water proof. If the wall is wet of mouldy, the mould needs to be eliminated completely by brushing fungicide on it which will also make it moisture proof.

## Adhesive Applying:

Apply adhesive evenly to the back of the wallpaper, fold and leave it for 5-10 minutes, and let the cloth absorb the adhesive completely. For heavy wallpaper, you can also brush adhesive directly to the wall and wait 5-10 minutes before hanging.

## Hanging :

Start to hang from a corner and use a plumb line to ensure the wallpaper is straight and not leaning to one side, if the corner you started from is not straight, use a wiper board to smooth the wallpaper evenly and gently to remove any bubbles. For heavier wallpaper, use a strong glue for the seams. When applying the second strip, it should be applied to edge of the previous one and make sure the design is matched. For plain wallpapers there is no need to match. Overlap the two strips and use a sharp knife to cut in the middle. To make the cutting line straight, use a steel ruler.







W5311-1

WEBER

## ENVIRONMENTAL WALL COVERING



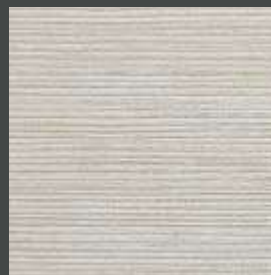
W5311-2



W5311-3



W5311-4



W5311-5



W5311-6



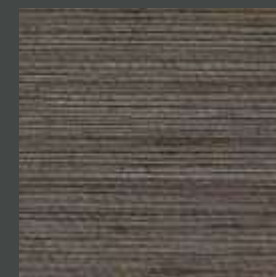
W5311-7



W5311-8



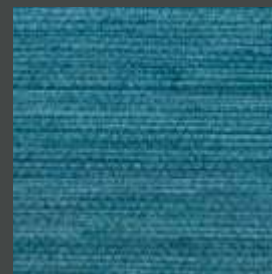
W5311-9



W5311-10



W5311-11



W5311-12



W5311-13

MONIS



DELIN



52"/54" VINYL WALLCOVERINGS

MONIS/DELIN

MONIS/DELIN

## Product Specifications

Type II, Medium Weight, Class A, Vinyl Coated

Fabric Backed Wallcovering

Width : 52"/54" (132 cm/137cm)

Total Weight : 20.0.oz./lin.yard - 615 gr/lin-meter

Backing : Woven Cotton Backing

Fire Rated : Class - "A" Tested In Accordance  
ASTM E-84 Tunnel Test

Tensile Breaking Strength : 80X75 Pounds

Flame Spread : 20

Smoke Developed : 25

Pattern Match : Random Match

Packaging : 50 Meter Bolts



US Classification : ASTM-E84 Class - A

CHN Classification : GB8624-2012: Class B

EU Classification : EN 15102 : 2007+A1 : 2011



## Anti Microbial Features:

Water based environmentally friendly inks, free of Cadmium. Mercury and Ozone depleting chemicals.

## Wall Surface Preparations:

The wall surface must be clean, smooth, stable, even and all in one colour before hanging wallpaper. The wall should be dry enough with a maximum of 8% water absorption. If the other side of the wall is in a bathroom, the surface of the wall must be water proof. If the wall is wet or mouldy, the mould needs to be eliminated completely by brushing fungicide on it which will also make it moisture proof.

## Adhesive Applying:

Apply adhesive evenly to the back of the wallpaper, fold and leave it for 5-10 minutes, and let the cloth absorb the adhesive completely. For heavy wallpaper, you can also brush adhesive directly to the wall and wait 5-10 minutes before hanging.

## Hanging :

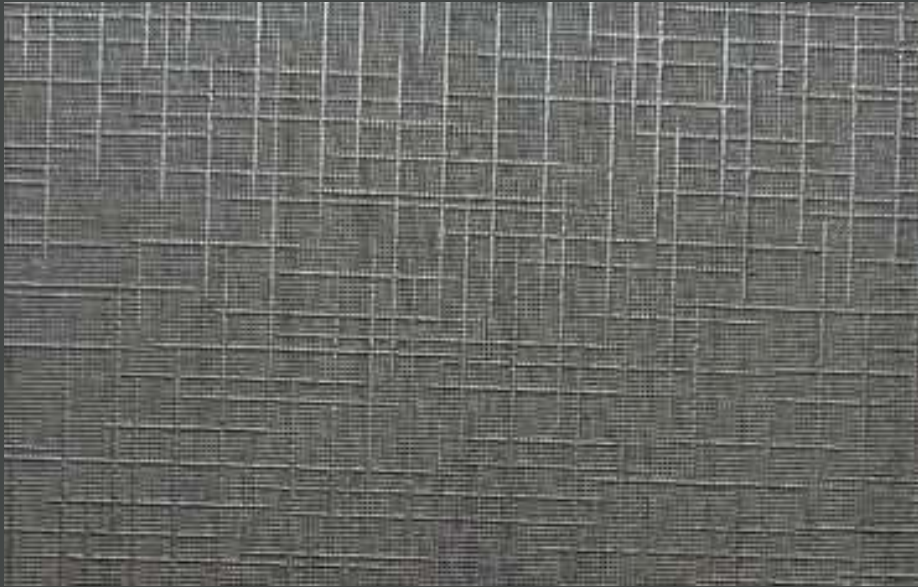
Start to hang from a corner and use a plumb line to ensure the wallpaper is straight and not leaning to one side, if the corner you started from is not straight, use a wiper board to smooth the wallpaper evenly and gently to remove any bubbles. For heavier wallpaper, use a strong glue for the seams. When applying the second strip, it should be applied to edge of the previous one and make sure the design is matched. For plain wallpapers there is no need to match. Overlap the two strips and use a sharp knife to cut in the middle. To make the cutting line straight, use a steel ruler.



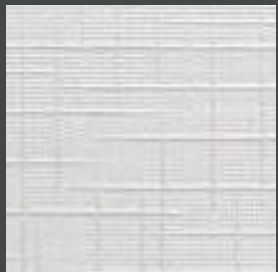
Designed in USA



## MONIS



W2091-1



W2091-2



W2091-3



W2091-4



W2091-5



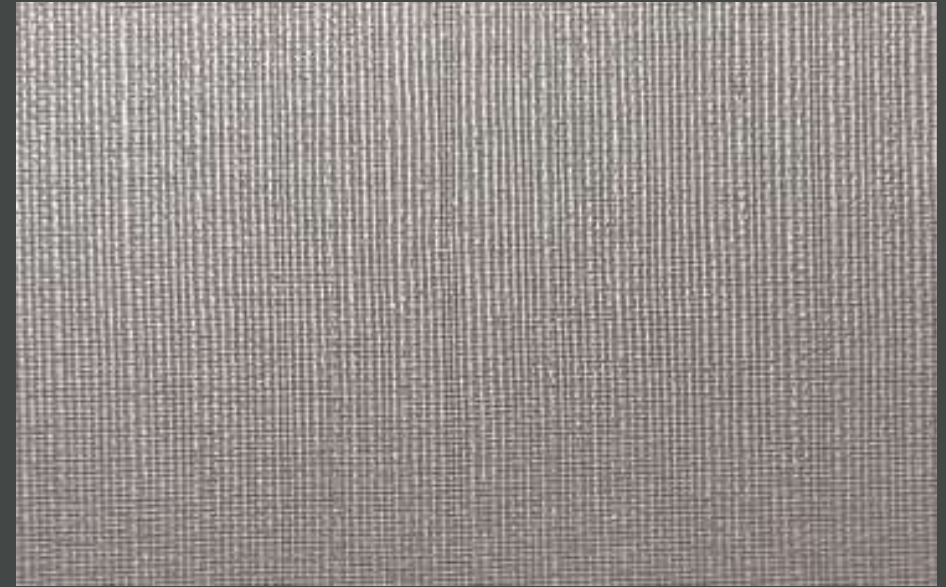
W2091-6



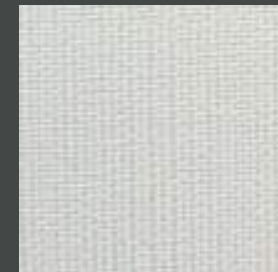
W2091-7

## DELIN

## ENVIRONMENTAL WALL COVERING



W3001-1



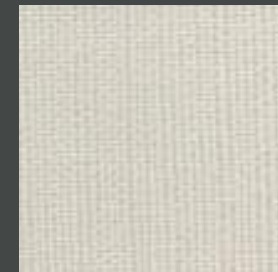
W3001-2



W3001-3



W3001-4



W3001-5



W3001-6



W3001-7



52" / 54" VINYL WALLCOVERINGS

WIZARD

### Product Specifications

Type II, Medium Weight, Class A, Vinyl Coated

Fabric Backed Wallcovering

Width : 52"/54" (132 cm/137cm)

Total Weight : 20.0.oz./lin.yard - 615 gr/lin-meter

Backing : Woven Cotton Backing

Fire Rated : Class - "A" Tested In Accordance  
ASTM E-84 Tunnel Test

Tensile Breaking Strength : 80X75 Pounds

Flame Spread : 20

Smoke Developed : 25

Pattern Match : Random Match

Packaging : 50 Meter Bolts



US Classification : ASTM-E84 Class - A

CHN Classification : GB8624-2012: Class B

EU Classification : EN 15102 : 2007+A1 : 2011



### Anti Microbial Features:

Water based environmentally friendly inks, free of Cadmium, Mercury and Ozone depleting chemicals.

### Wall Surface Preparations:

The wall surface must be clean, smooth, stable, even and all in one colour before hanging wallpaper. The wall should be dry enough with a maximum of 8% water absorption. If the other side of the wall is in a bathroom, the surface of the wall must be water proof. If the wall is wet of mouldy, the mould needs to be eliminated completely by brushing fungicide on it which will also make it moisture proof.

### Adhesive Applying:

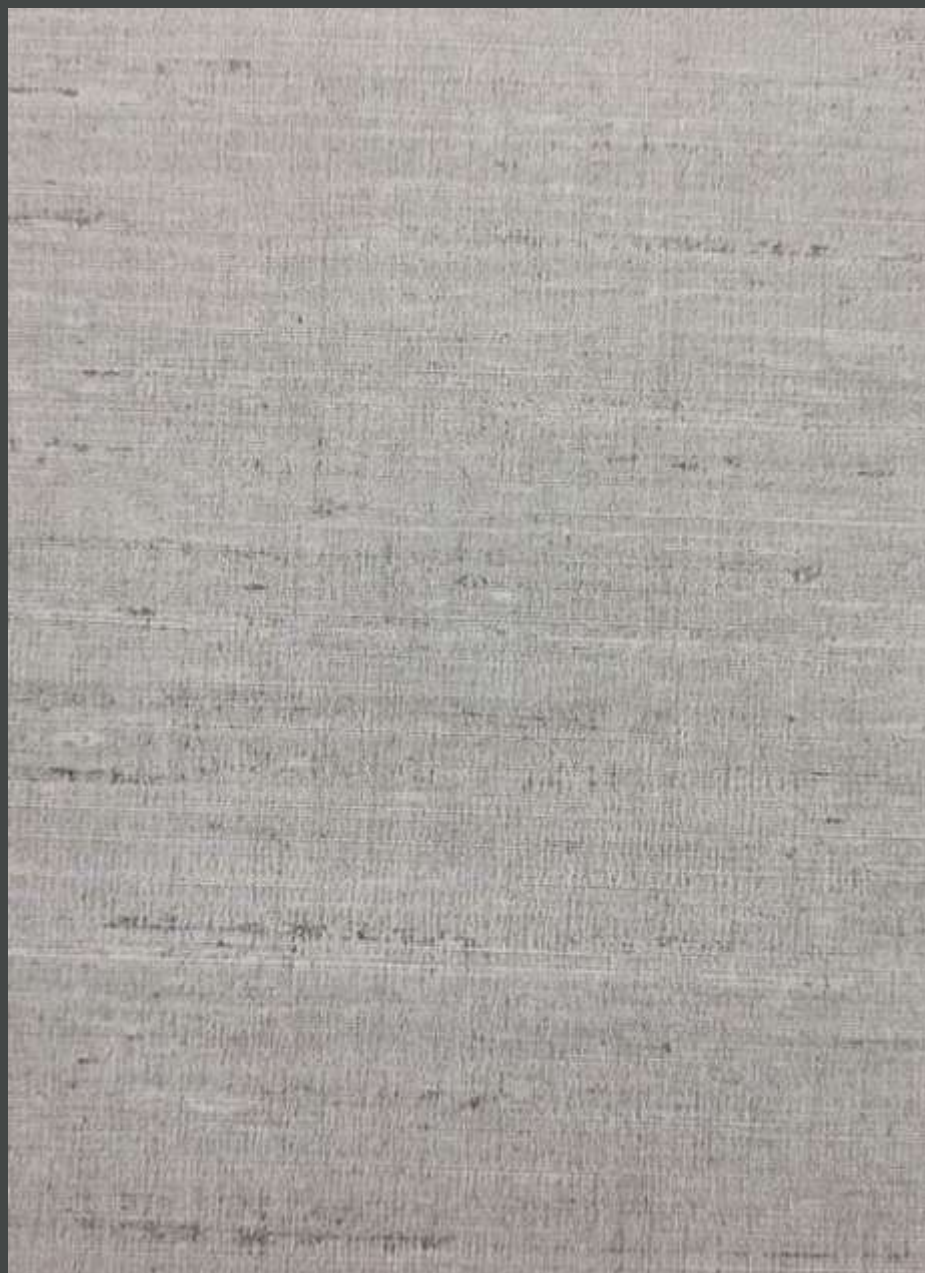
Apply adhesive evenly to the back of the wallpaper, fold and leave it for 5-10 minutes, and let the cloth absorb the adhesive completely. For heavy wallpaper, you can also brush adhesive directly to the wall and wait 5-10 minutes before hanging.

### Hanging :

Start to hang from a corner and use a plumb line to ensure the wallpaper is straight and not leaning to one side, if the corner you started from is not straight, use a wiper board to smooth the wallpaper evenly and gently to remove any bubbles. For heavier wallpaper, use a strong glue for the seams. When applying the second strip, it should be applied to edge of the previous one and make sure the design is matched. For plain wallpapers there is no need to match. Overlap the two strips and use a sharp knife to cut in the middle. To make the cutting line straight, use a steel ruler.







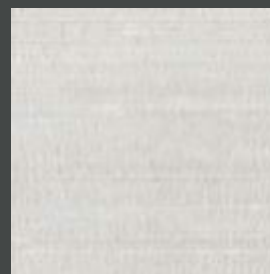
W5232-1

WIZARD

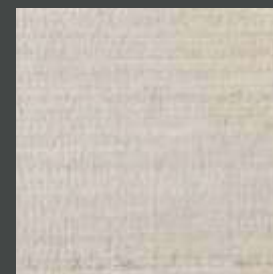
## ENVIRONMENTAL WALL COVERING



W5232-2



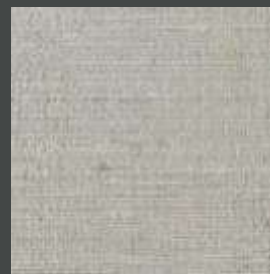
W5232-3



W5232-4



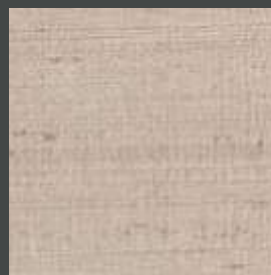
W5232-5



W5232-6



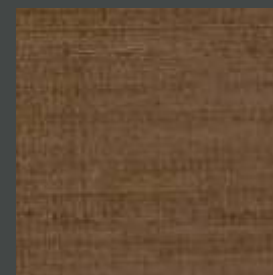
W5232-7



W5232-8



W5232-9



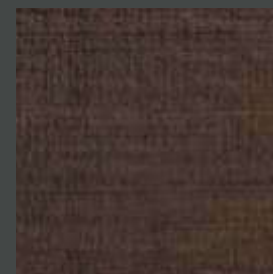
W5232-10



W5232-11



W5232-12



W5232-13

DELAS



CAMRY



52"/54" VINYL WALLCOVERINGS

DELAS/CAMRY

DELAS/CAMRY

### Product Specifications

Type II, Medium Weight, Class A, Vinyl Coated	
Fabric Backed Wallcovering	
Width	: 52"/54" (132 cm/137cm)
Total Weight	: 15.0.oz./lin.yard - 466 gr/lin-meter
Backing	: Woven Cotton Backing
Fire Rated	: Class - "A" Tested In Accordance ASTM E-84 Tunnel Test
Tensile Breaking Strength	: 80X75 Pounds
Flame Spread	: 20
Smoke Developed	: 25
Pattern Match	: Random Match
Packaging	: 50 Meter Bolts



US Classification : ASTM-E84 Class - A

CHN Classification : GB8624-2012: Class B

EU Classification : EN 15102 : 2007+A1 : 2011



### Anti Microbial Features:

Water based environmentally friendly inks, free of Cadmium, Mercury and Ozone depleting chemicals.

### Wall Surface Preparations:

The wall surface must be clean, smooth, stable, even and all in one colour before hanging wallpaper. The wall should be dry enough with a maximum of 8% water absorption. If the other side of the wall is in a bathroom, the surface of the wall must be water proof. If the wall is wet of mouldy, the mould needs to be eliminated completely by brushing fungicide on it which will also make it moisture proof.

### Adhesive Applying:

Apply adhesive evenly to the back of the wallpaper, fold and leave it for 5-10 minutes, and let the cloth absorb the adhesive completely. For heavy wallpaper, you can also brush adhesive directly to the wall and wait 5-10 minutes before hanging.

### Hanging :

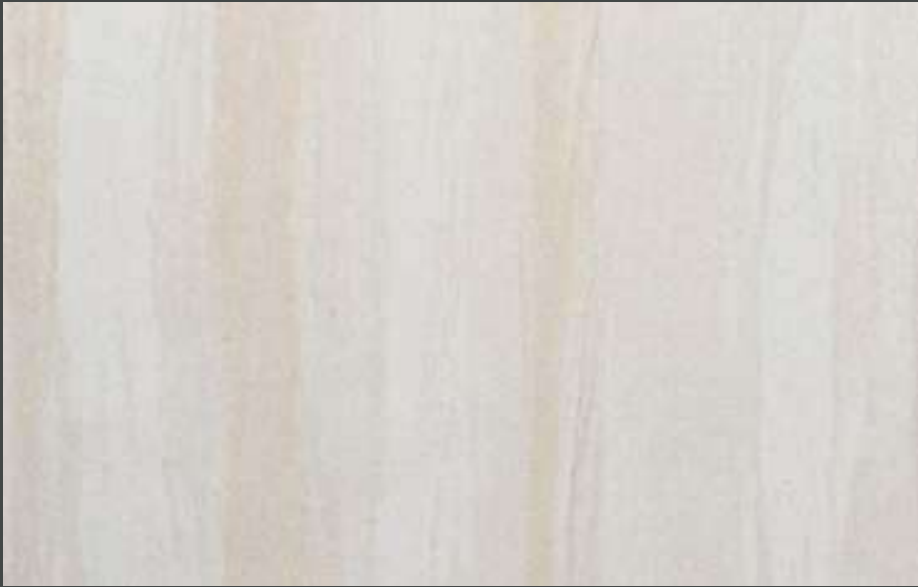
Start to hang from a corner and use a plumb line to ensure the wallpaper is straight and not leaning to one side, if the corner you started from is not straight, use a wiper board to smooth the wallpaper evenly and gently to remove any bubbles. For heavier wallpaper, use a strong glue for the seams. When applying the second strip, it should be applied to edge of the previous one and make sure the design is matched. For plain wallpapers there is no need to match. Overlap the two strips and use a sharp knife to cut in the middle. To make the cutting line straight, use a steel ruler.



Designed in USA



DELAS



W1156-1



W1156-2



W1156-3



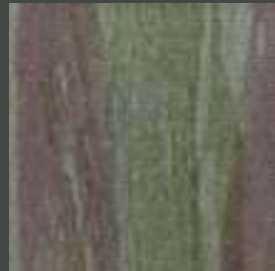
W1156-4



W1156-5



W1156-6



W1156-7

CAMRY

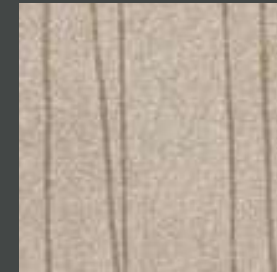
ENVIRONMENTAL WALL COVERING



W3717-1



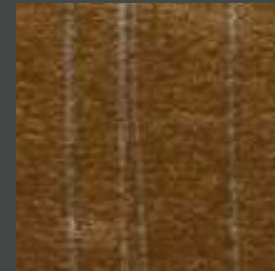
W3717-2



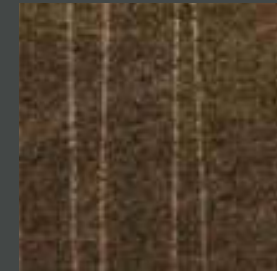
W3717-3



W3717-4



W3717-5



W3717-6



W3717-7

GEOREL



GEOMAT



52"/54" VINYL WALLCOVERINGS

GEOREL/GEOMAT

GEOREL/GEOMAT

### Product Specifications

Type II, Medium Weight, Class A, Vinyl Coated

Fabric Backed Wallcovering

Width	: 52"/54" (132 cm/137cm)
Total Weight	: 15.0.oz./lin.yard - 466 gr/lin-meter
Backing	: Woven Cotton Backing
Fire Rated	: Class - "A" Tested In Accordance ASTM E-84 Tunnel Test
Tensile Breaking Strength	: 80X75 Pounds
Flame Spread	: 20
Smoke Developed	: 25
Pattern Match	: Random Match
Packaging	: 50 Meter Bolts



US Classification : ASTM-E84 Class - A

CHN Classification : GB8624-2012: Class B

EU Classification : EN 15102 : 2007+A1 : 2011



### Anti Microbial Features:

Water based environmentally friendly inks, free of Cadmium, Mercury and Ozone depleting chemicals.

### Wall Surface Preparations:

The wall surface must be clean, smooth, stable, even and all in one colour before hanging wallpaper. The wall should be dry enough with a maximum of 8% water absorption. If the other side of the wall is in a bathroom, the surface of the wall must be water proof. If the wall is wet of mouldy, the mould needs to be eliminated completely by brushing fungicide on it which will also make it moisture proof.

### Adhesive Applying:

Apply adhesive evenly to the back of the wallpaper, fold and leave it for 5-10 minutes, and let the cloth absorb the adhesive completely. For heavy wallpaper, you can also brush adhesive directly to the wall and wait 5-10 minutes before hanging.

### Hanging :

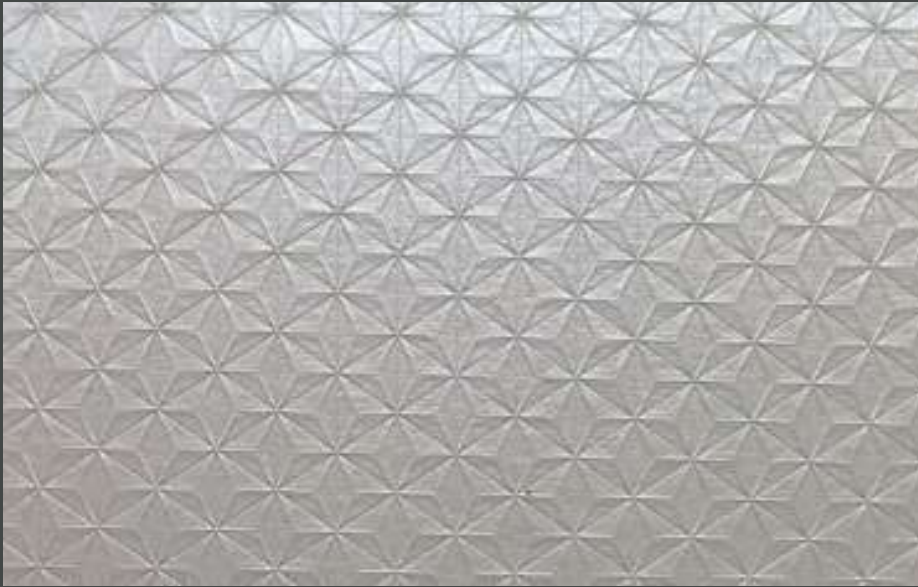
Start to hang from a corner and use a plumb line to ensure the wallpaper is straight and not leaning to one side, if the corner you started from is not straight, use a wiper board to smooth the wallpaper evenly and gently to remove any bubbles. For heavier wallpaper, use a strong glue for the seams. When applying the second strip, it should be applied to edge of the previous one and make sure the design is matched. For plain wallpapers there is no need to match. Overlap the two strips and use a sharp knife to cut in the middle. To make the cutting line straight, use a steel ruler.



Designed in USA



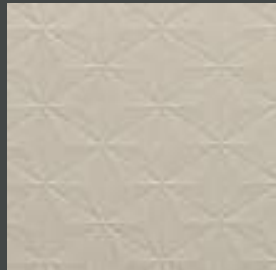
## GEOREL



W1393-1



W1393-2



W1393-3



W1393-4



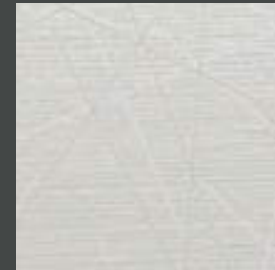
W1393-5

## GEOMAT

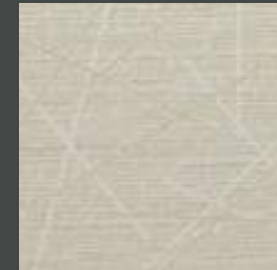
## ENVIRONMENTAL WALL COVERING



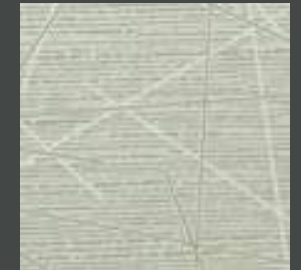
W3891-1



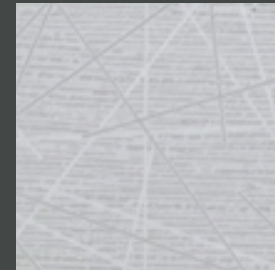
W3891-2



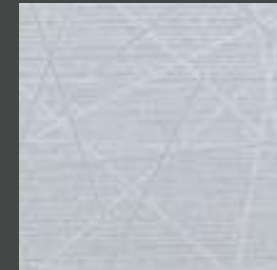
W3891-3



W3891-4



W3891-5



W3891-6



W3891-7

LINTEX



ALIXER



52"/54" VINYL WALLCOVERINGS

LINTEX/ALIXER

LINTEX/ALIXER

### Product Specifications

Type II, Medium Weight, Class A, Vinyl Coated

Fabric Backed Wallcovering

Width : 52"/54" (132 cm/137cm)

Total Weight : 20.0.oz./lin.yard - 615 gr/lin-meter

Backing : Woven Cotton Backing

Fire Rated : Class - "A" Tested In Accordance  
ASTM E-84 Tunnel Test

Tensile Breaking Strength : 80X75 Pounds

Flame Spread : 20

Smoke Developed : 25

Pattern Match : Random Match

Packaging : 50 Meter Bolts



US Classification : ASTM-E84 Class - A

CHN Classification : GB8624-2012: Class B

EU Classification : EN 15102 : 2007+A1 : 2011



### Anti Microbial Features:

Water based environmentally friendly inks, free of Cadmium, Mercury and Ozone depleting chemicals.

### Wall Surface Preparations:

The wall surface must be clean, smooth, stable, even and all in one colour before hanging wallpaper. The wall should be dry enough with a maximum of 8% water absorption. If the other side of the wall is in a bathroom, the surface of the wall must be water proof. If the wall is wet of mouldy, the mould needs to be eliminated completely by brushing fungicide on it which will also make it moisture proof.

### Adhesive Applying:

Apply adhesive evenly to the back of the wallpaper, fold and leave it for 5-10 minutes, and let the cloth absorb the adhesive completely. For heavy wallpaper, you can also brush adhesive directly to the wall and wait 5-10 minutes before hanging.

### Hanging :

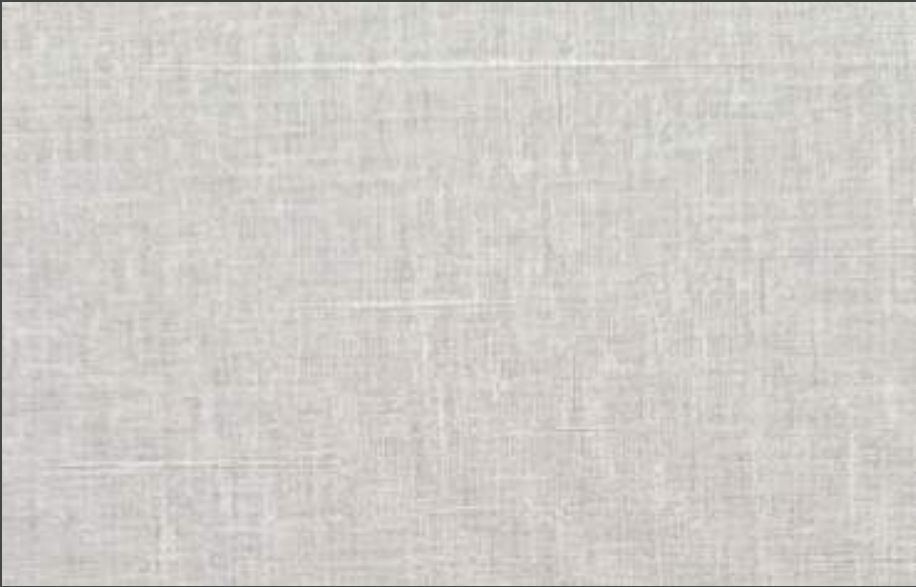
Start to hang from a corner and use a plumb line to ensure the wallpaper is straight and not leaning to one side, if the corner you started from is not straight, use a wiper board to smooth the wallpaper evenly and gently to remove any bubbles. For heavier wallpaper, use a strong glue for the seams. When applying the second strip, it should be applied to edge of the previous one and make sure the design is matched. For plain wallpapers there is no need to match. Overlap the two strips and use a sharp knife to cut in the middle. To make the cutting line straight, use a steel ruler.



Designed in USA



## LINTEX



W4441-1



W4441-2



W4441-3



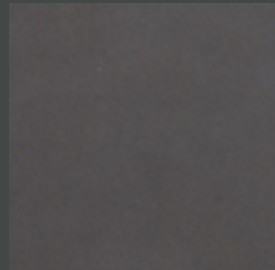
W4441-4



W4441-5



W4441-6



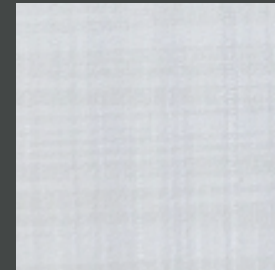
W4441-7

## ALIXER

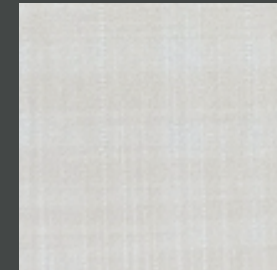
## ENVIRONMENTAL WALL COVERING



W4531-1



W4531-2



W4531-3



W4531-4



W4531-5



W4531-6



W4531-7

## WRATH



## HERITAGE



52"/54" VINYL WALLCOVERINGS

WRATH/HERITAGE

## WRATH/HERITAGE

### Product Specifications

Type II, Medium Weight, Class A, Vinyl Coated

Fabric Backed Wallcovering

Width	: 52"/54" (132 cm/137cm)
Total Weight	: 20.0.oz./lin.yard - 615 gr/lin-meter
Backing	: Woven Cotton Backing
Fire Rated	: Class - "A" Tested In Accordance ASTM E-84 Tunnel Test
Tensile Breaking Strength	: 80X75 Pounds
Flame Spread	: 20
Smoke Developed	: 25
Pattern Match	: Random Match
Packaging	: 50 Meter Bolts



US Classification : ASTM-E84 Class - A

CHN Classification : GB8624-2012: Class B

EU Classification : EN 15102 : 2007+A1 : 2011



### Anti Microbial Features:

Water based environmentally friendly inks, free of Cadmium, Mercury and Ozone depleting chemicals.

### Wall Surface Preparations:

The wall surface must be clean, smooth, stable, even and all in one colour before hanging wallpaper. The wall should be dry enough with a maximum of 8% water absorption. If the other side of the wall is in a bathroom, the surface of the wall must be water proof. If the wall is wet of mouldy, the mould needs to be eliminated completely by brushing fungicide on it which will also make it moisture proof.

### Adhesive Applying:

Apply adhesive evenly to the back of the wallpaper, fold and leave it for 5-10 minutes, and let the cloth absorb the adhesive completely. For heavy wallpaper, you can also brush adhesive directly to the wall and wait 5-10 minutes before hanging.

### Hanging :

Start to hang from a corner and use a plumb line to ensure the wallpaper is straight and not leaning to one side, if the corner you started from is not straight, use a wiper board to smooth the wallpaper evenly and gently to remove any bubbles. For heavier wallpaper, use a strong glue for the seams. When applying the second strip, it should be applied to edge of the previous one and make sure the design is matched. For plain wallpapers there is no need to match. Overlap the two strips and use a sharp knife to cut in the middle. To make the cutting line straight, use a steel ruler.



Designed in USA



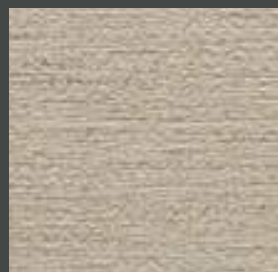
## WRATH



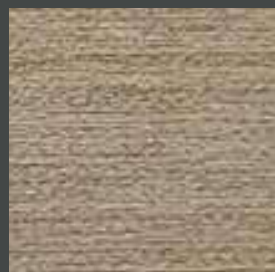
W5319-1



W5319-2



W5319-3



W5319-4



W5319-5

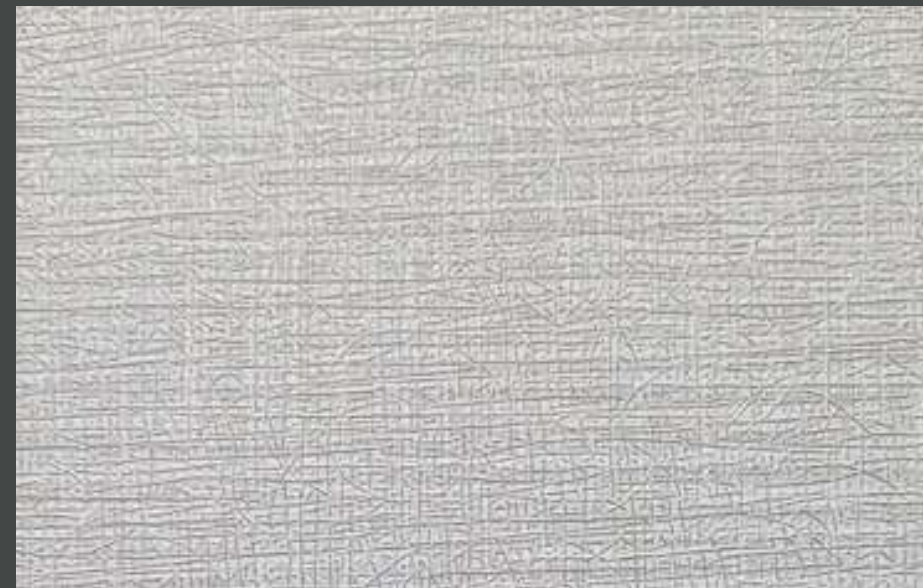


W5319-6

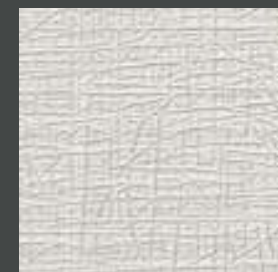


W5319-7

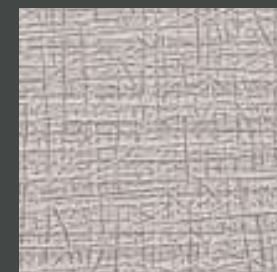
## HERITAGE



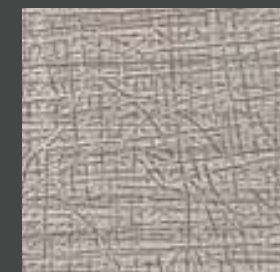
W3777-1



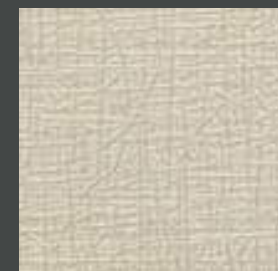
W3777-2



W3777-3



W3777-4



W3777-5



W3777-6



W3777-7

## ENVIRONMENTAL WALL COVERING

## DECORA



## MARKER



52"/54" VINYL WALLCOVERINGS

DECORA/MARKER

## DECORA/MARKER

### Product Specifications

Type II, Medium Weight, Class A, Vinyl Coated

Fabric Backed Wallcovering

Width : 52"/54" (132 cm/137cm)

Total Weight : 20.0.oz./lin.yard - 615 gr/lin-meter

Backing : Woven Cotton Backing

Fire Rated : Class - "A" Tested In Accordance  
ASTM E-84 Tunnel Test

Tensile Breaking Strength : 80X75 Pounds

Flame Spread : 20

Smoke Developed : 25

Pattern Match : Random Match

Packaging : 50 Meter Bolts



US Classification : ASTM-E84 Class - A

CHN Classification : GB8624-2012: Class B

EU Classification : EN 15102 : 2007+A1 : 2011



### Anti Microbial Features:

Water based environmentally friendly inks, free of Cadmium, Mercury and Ozone depleting chemicals.

### Wall Surface Preparations:

The wall surface must be clean, smooth, stable, even and all in one colour before hanging wallpaper. The wall should be dry enough with a maximum of 8% water absorption. If the other side of the wall is in a bathroom, the surface of the wall must be water proof. If the wall is wet of mouldy, the mould needs to be eliminated completely by brushing fungicide on it which will also make it moisture proof.

### Adhesive Applying:

Apply adhesive evenly to the back of the wallpaper, fold and leave it for 5-10 minutes, and let the cloth absorb the adhesive completely. For heavy wallpaper, you can also brush adhesive directly to the wall and wait 5-10 minutes before hanging.

### Hanging :

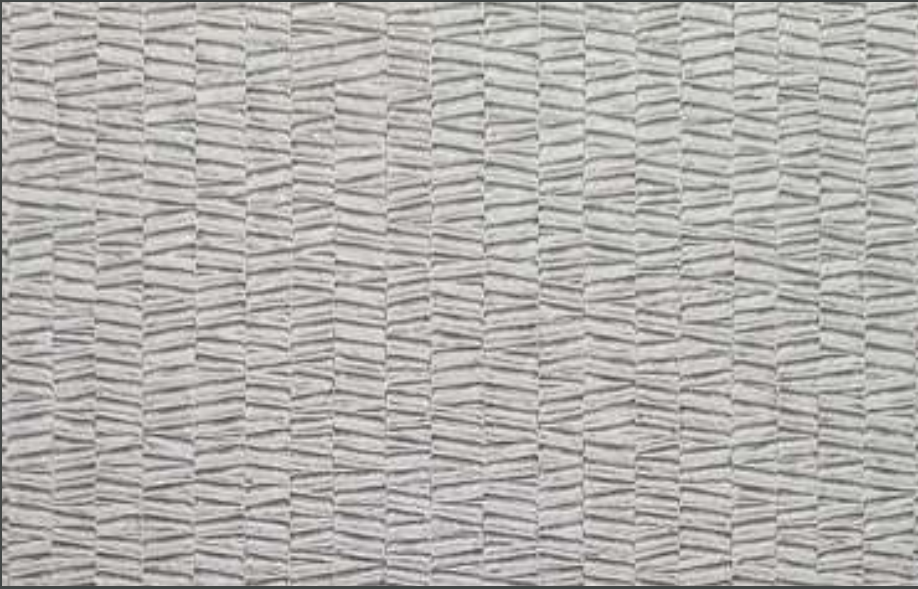
Start to hang from a corner and use a plumb line to ensure the wallpaper is straight and not leaning to one side, if the corner you started from is not straight, use a wiper board to smooth the wallpaper evenly and gently to remove any bubbles. For heavier wallpaper, use a strong glue for the seams. When applying the second strip, it should be applied to edge of the previous one and make sure the design is matched. For plain wallpapers there is no need to match. Overlap the two strips and use a sharp knife to cut in the middle. To make the cutting line straight, use a steel ruler.



Designed in USA



## DECORA



W3313-1



W3313-2



W3313-3



W3313-4



W3313-5



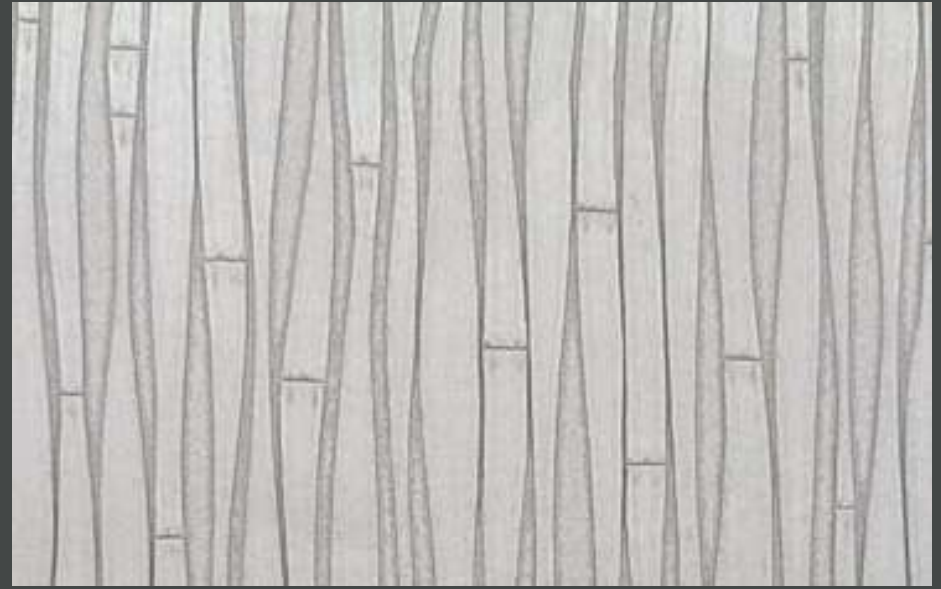
W3313-6



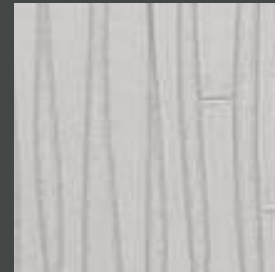
W3313-7

## MARKER

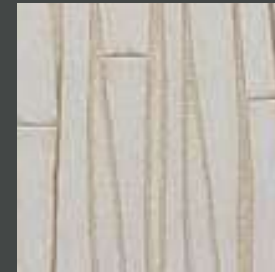
## ENVIRONMENTAL WALL COVERING



W3581-1



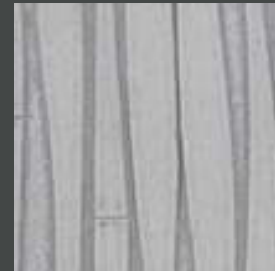
W3581-2



W3581-3



W3581-4



W3581-5



W3581-6



W3581-7

## SNAKY



## CRONO



52"/54" VINYL WALLCOVERINGS

SNAKY/CRONO

## SNAKY/CRONO

### Product Specifications

Type II, Medium Weight, Class A, Vinyl Coated	
Fabric Backed Wallcovering	
Width	: 52"/54" (132 cm/137cm) (SNAKY) 42"/44" (107cm/112cm) (CRONO)
Total Weight	: 20.0.oz./lin.yard (SNAKY) 15.0.oz./lin.yard (CRONO)
Backing	: Woven Cotton Backing
Fire Rated	: Class - "A" Tested In Accordance ASTM E-84 Tunnel Test
Tensile Breaking Strength	: 80X75 Pounds
Flame Spread	: 20
Smoke Developed	: 25
Pattern Match	: Random Match
Packaging	: 50 Meter Bolts



US Classification : ASTM-E84 Class - A

CHN Classification : GB8624-2012: Class B

EU Classification : EN 15102 : 2007+A1 : 2011



### Anti Microbial Features:

Water based environmentally friendly inks, free of Cadmium, Mercury and Ozone depleting chemicals.

### Wall Surface Preparations:

The wall surface must be clean, smooth, stable, even and all in one colour before hanging wallpaper. The wall should be dry enough with a maximum of 8% water absorption. If the other side of the wall is in a bathroom, the surface of the wall must be water proof. If the wall is wet of mouldy, the mould needs to be eliminated completely by brushing fungicide on it which will also make it moisture proof.

### Adhesive Applying:

Apply adhesive evenly to the back of the wallpaper, fold and leave it for 5-10 minutes, and let the cloth absorb the adhesive completely. For heavy wallpaper, you can also brush adhesive directly to the wall and wait 5-10 minutes before hanging.

### Hanging :

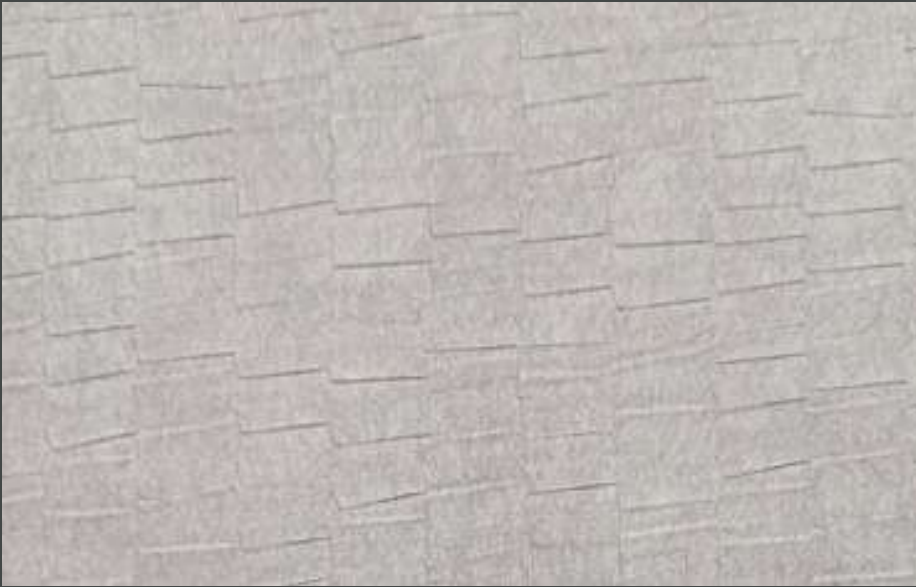
Start to hang from a corner and use a plumb line to ensure the wallpaper is straight and not leaning to one side, if the corner you started from is not straight, use a wiper board to smooth the wallpaper evenly and gently to remove any bubbles. For heavier wallpaper, use a strong glue for the seams. When applying the second strip, it should be applied to edge of the previous one and make sure the design is matched. For plain wallpapers there is no need to match. Overlap the two strips and use a sharp knife to cut in the middle. To make the cutting line straight, use a steel ruler.



Designed in USA



## SNAKY



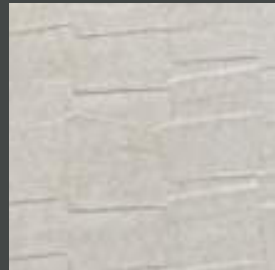
W3322-1



W3322-2



W3322-3



W3322-4



W3322-5



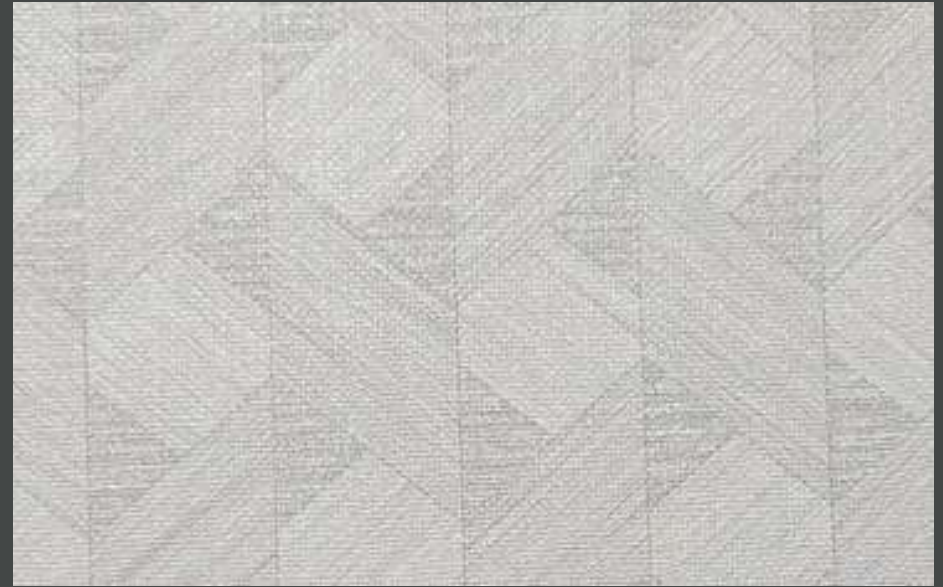
W3322-6



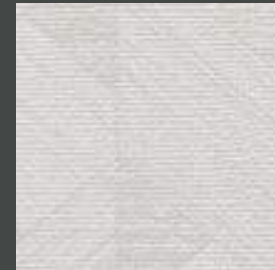
W3322-7

## CRONO

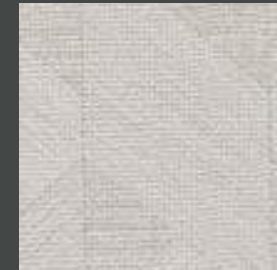
## ENVIRONMENTAL WALL COVERING



W4631-1



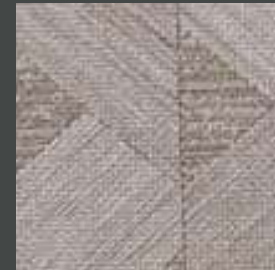
W4631-2



W4631-3



W4631-4



W4631-5



W4631-6



W4631-7

FEBRYA



WILSON



42"/44" VINYL WALLCOVERINGS

FEBRYA/WILSON

FEBRYA/WILSON

### Product Specifications

Type II, Medium Weight, Class A, Vinyl Coated	
Fabric Backed Wallcovering	
Width	: 42"/44" (107 cm/112cm)
Total Weight	: 20.0.oz./lin.yard - 565 gr/lin-meter
Backing	: Woven Cotton Backing
Fire Rated	: Class - "A" Tested In Accordance ASTM E-84 Tunnel Test
Tensile Breaking Strength	: 80X75 Pounds
Flame Spread	: 20
Smoke Developed	: 25
Pattern Match	: Random Match
Packaging	: 50 Meter Bolts



US Classification : ASTM-E84 Class - A

CHN Classification : GB8624-2012: Class B

EU Classification : EN 15102 : 2007+A1 : 2011



### Anti Microbial Features:

Water based environmentally friendly inks, free of Cadmium. Mercury and Ozone depleting chemicals.

### Wall Surface Preparations:

The wall surface must be clean, smooth, stable, even and all in one colour before hanging wallpaper. The wall should be dry enough with a maximum of 8% water absorption. If the other side of the wall is in a bathroom, the surface of the wall must be water proof. If the wall is wet of mouldy, the mould needs to be eliminated completely by brushing fungicide on it which will also make it moisture proof.

### Adhesive Applying:

Apply adhesive evenly to the back of the wallpaper, fold and leave it for 5-10 minutes, and let the cloth absorb the adhesive completely. For heavy wallpaper, you can also brush adhesive directly to the wall and wait 5-10 minutes before hanging.

### Hanging :

Start to hang from a corner and use a plumb line to ensure the wallpaper is straight and not leaning to one side, if the corner you started from is not straight, use a wiper board to smooth the wallpaper evenly and gently to remove any bubbles. For heavier wallpaper, use a strong glue for the seams. When applying the second strip, it should be applied to edge of the previous one and make sure the design is matched. For plain wallpapers there is no need to match. Overlap the two strips and use a sharp knife to cut in the middle. To make the cutting line straight, use a steel ruler.



Designed in USA



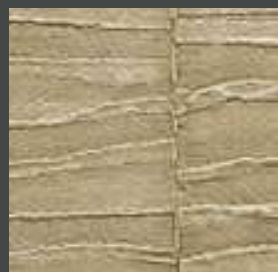
## FEBRYA



W4112-1



W4112-2



W4112-3



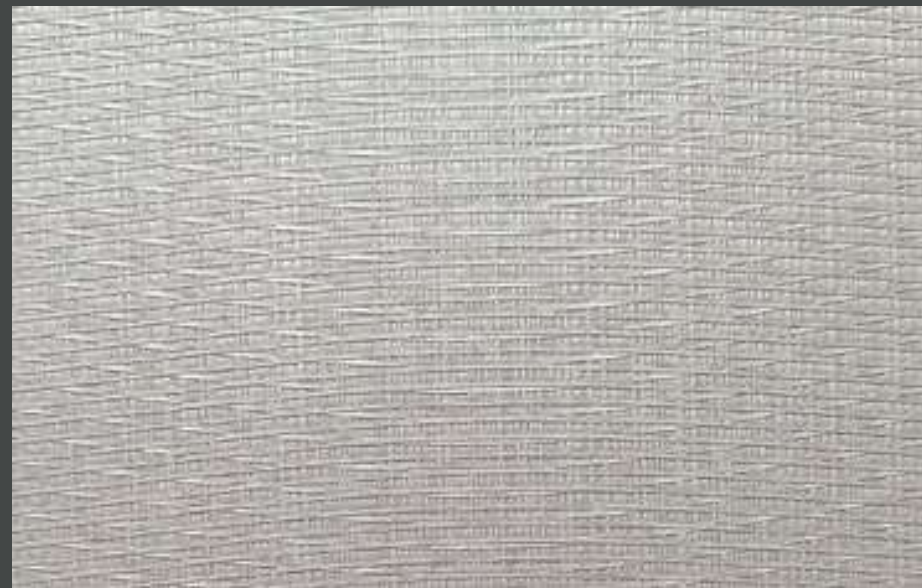
W4112-4



W4112-5

## WILSON

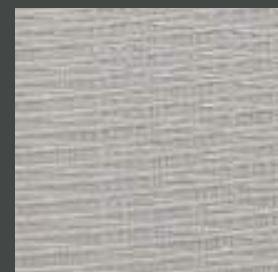
## ENVIRONMENTAL WALL COVERING



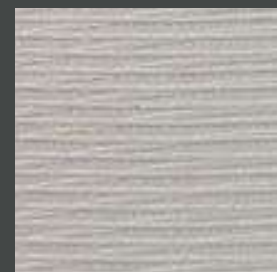
W4424-1



W4424-2



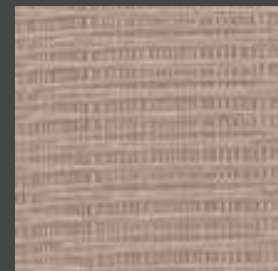
W4424-3



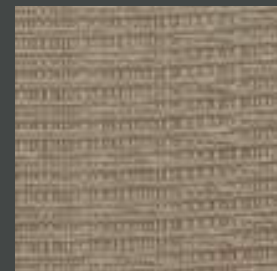
W4424-4



W4424-5



W4424-6



W4424-7